

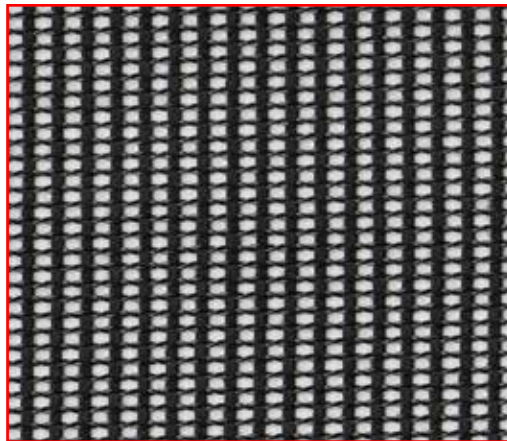
M1 & M3 Mesh

Pattern: M1 Mesh

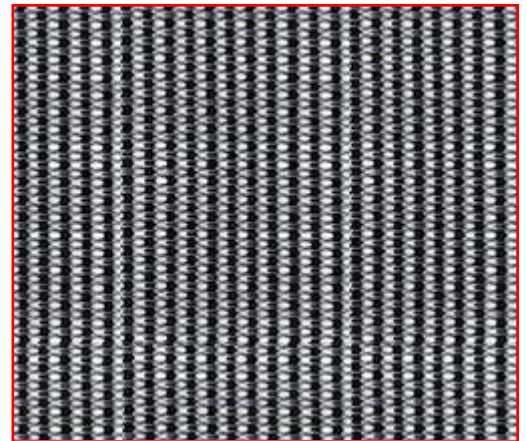
Content:
68% Elastomeric,
32% Polyester

Abrasion
Resistance: 100,000
(Double Rubs)

Soil and Stain
Resistant



Black M11



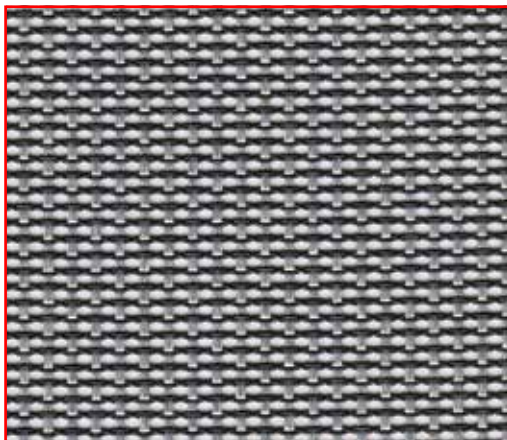
Graphite M31

Pattern: M3 Mesh

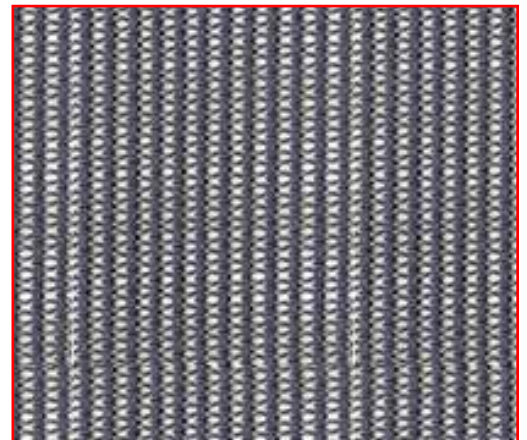
Content:
75% Copolyester,
25% Polyester

Abrasion
Resistance: 100,000
(Double Rubs)

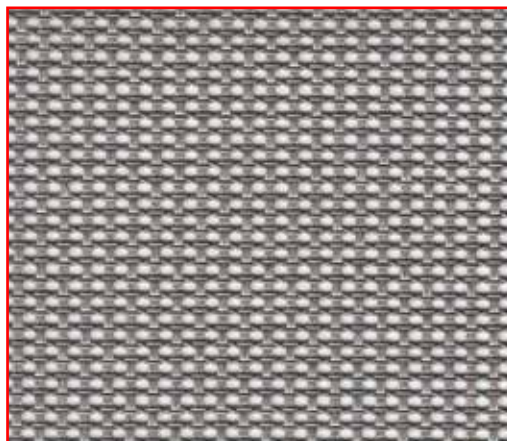
Soil and Stain
Resistant



Gray M12



Slate M32



Silver M13



Snow M33

info

Pattern	M1 Mesh
Content	68% Elastomeric, 32% Polyester
Abrasion Resistance (Double Rubs)	100,000
Cleaning Code	W

Pattern	M3 Mesh
Content	75% Copolyester, 25% Polyester
Abrasion Resistance (Double Rubs)	100,000
Cleaning Code	W



M1 and M3 Mesh meet or exceed these ACT Performance standards for upholstery

All patterns are FR free.

Icon Upholstery Definitions



Fire Retardancy

Flammable testing determines as fabric's resistance to burning. Passes Cal 117.



Colorfastness To Wet & Dry Crocking

The rubbing off of color from the fabric onto clothing, hands or other materials and can occur under wet or dry conditions. Passes AATCC 8-1974 Dry Crocking. Class 4 minimum, Wet Crocking. Class 3 minimum.



Colorfastness to Light

The degree to which fabric will retain its color when exposed to light. Passes AATCC 16A-1974 or AATCC 16E-1976. Class 4 minimum at 40 Hours. Note: Class 4 minimum at 60 hours is recommended for direct sunlight exposure.



Physical Properties

Brush Pill Test determines a fabric's pilling. Breaking/Tensile Strength Test determines the ability of a fabric to withstand tension without breaking or tearing. Seam Slippage Test determines the pulling apart of fabrics at the seams. Passes Brush Pill ASTM D3511, 3-4 minimum. Breaking Strength ASTM D3597-D1682-64 (1975) 50 lbs. minimum in warp & weft, Seam Slippage ASTM D3597-D434-75 25 lbs. minimum in warp & weft.



Abrasion

The ability of a fabric to withstand damage from wear and rubbing. Passes Heavy Duty Contract ASTM 3597 modified (No. 10 cotton duck); 30,000 double rubs Wyzenbeek Method or ASTM D4966 modified (with 21 oz. weight); 40,000 rubs Martindale Method.

Cleaning Codes

W: Water-based cleaning agents or foam may be used.

CAUTION: Use of water-based or detergent-based solvents may cause spotting, shrinking and/or permanent water stains. Solvent cleaning agents will remove water stains.

9to5[®]
s e a t i n g

PHONE 888.925.SEAT

FAX 866.925.SEAT

EMAIL sales@9to5seating.com

3211 Jack Northrop Ave.
Hawthorne, CA 90250

9to5seating.com

Follow us @9to5seating

