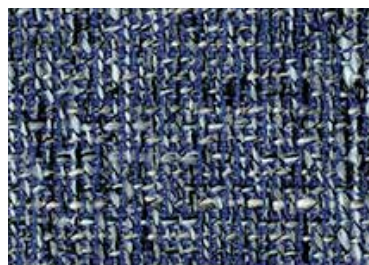
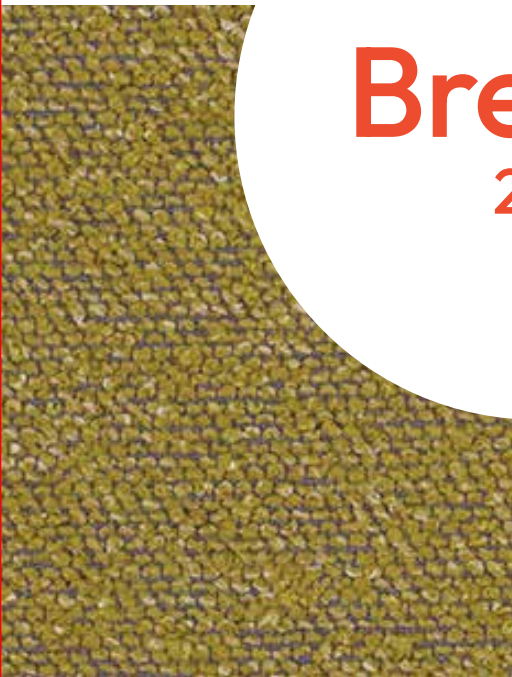


Breeze
2.0



9TO5 SEATING'S EXPRESSSHIP
FABRIC PROGRAM



Need it fast? We have you covered with a wide variety of upholstery options! Our ExpressShip program offers expedited shipment on our seating products, except lounge. ExpressShip fabric options include the 9to5 Signature 4.0, Breeze 2.0, Vivid, Sil-One Novel and Momentum Swift 2.0 textiles cards. Memo samples are available. Please contact the factory for swatches.

Info

Width - Pattern	Fiber Content & Backing	Finish	Abrasion (D.R.)	Lightfastness	Cleaning Code	Grade
54" Sandbar	100% Polyester	i-clean™	100,000	40 hours, Class 4	WS	A
54" Current	100% Polyester	i-clean™	80,000	40 hours, Class 4	WS	A
57" Coral	100% Polyester, Pongee backing		54,000	40 hours, Class 4	S	B
54" Wallace	100% Polyester	i-clean™	55,000		W	B
54" Seaside	67% Polyester, 33% post consumer recycled polyester, acrylic backing		200,000	40 hours, Class 5	W	B
54" Coastal	84% Polyester, 16% Rayon	Stain Repellent	100,000		WS	C
54" Palisades	100% Polyester	Stain Repellent	100,000		WS	C
54" Reef	85% Polyester, 15% cotton, Acrylic backing	Stain repellent	100,000	40 hours, Class 5	WS	B
54" Marina	100% Polyester	i-clean™	100,000	40 hours, Class 4	WS	B
54" Oceanside	100% Polyester	i-clean™	95,000	40 hours, Class 4	W	B

These patterns meet or exceed these ACT Performance Guidelines for upholstery.

All patterns are FR free.

ICON UPHOLSTERY DEFINITIONS

- Fire Retardancy**
Flammable testing determined as fabric's resistance to burning.
PASSES - California 117
- Colorfastness To Wet & Dry Crocking**
Colorfastness to wet & dry crocking refers to the rubbing off of color from the fabric onto clothing, hands or other materials and can occur under wet or dry conditions.
PASSES - AATCC 8-1974 Dry Crocking, Class 4 minimum; Wet Crocking, Class 3 minimum.
- Abrasion**
Abrasion is the ability of fabric to withstand damage from wear and rub. This is a general contract specification as well as a heavy duty specification.
PASSES -
General Contact: ASTM 3579 modified (#10 cotton duck); 15,000 double rubs Wyzenbeek Method
A Heavy Duty: ASTM 3579 modified (#10 cotton duck); 30,000 double rubs Wyzenbeek Method or ASTM D4966 (with 21oz. weight); 40,000 rubs Martindale Method
- Colorfastness to Light**
Colorfastness to light is the degree to which fabric will retain its color when exposed to light.
PASSES - AATCC 16A-1974 or AATC 16E-1976; Class 4 minimum at 40 Hours. NOTE: Class 4 minimum at 60 hours is recommended for direct sunlight exposure situations.

Physical Properties
3 Physical property tests include: brush pill test to determine a fabric's pilling. Breaking/tensile strength is the ability of a fabric to withstand tension without breaking or tearing. Seam slippage is the pulling apart of fabrics at the seam.

PASSES - Brush Pill ASTM D3511, 3-4 minimum. Breaking Strength ASTM D3597-D1682-64 (1975) 50lbs. minimum in warp & weft Seam Slippage ASTM D3597-D434-75 25lbs. minimum in warp & weft.

CLEANING CODE DEFINITIONS

W: Water-based foam or cleaner.
WS: Water-based cleaning agents, foam or solvent-based cleaners may be used. CAUTION: Use of water-based or detergent-based solvents may cause spotting, shrinking and/or permanent water stains. Solvent cleaning agents will remove water stains.

S: Spot clean only with a water-free cleaning solvent. DO NOT USE WATER. Cushion covers should not be removed and dry-cleaned. When cleaning a spill, blot immediately to remove spilled material. Clean spots or stains from the outside to the middle of the affected area to prevent circling.

FINISH DEFINITIONS

i-clean™ is a high performance stain, and moisture repellent, based on Nano technology.
Stain repellent is designed to withstand most discoloration caused by contact with liquids.

Part of the Flokk Group



Seating for an evolving world.

9to5seating.com
3211 Jack Northrop Ave.
Hawthorne, CA 90250

P: 888.925.SEAT
F: 866.925.SEAT
E: sales@9to5seating.com



Follow us @9to5seating



©2025 9to5 Seating
LIT-C-BREEZE-V24 • Version 2



GRADE A



Sandbar Sterling



Horizon



Palladium



Graphene



Goldenrod

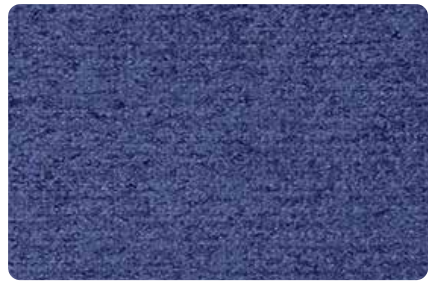


Ruby



Abyss

GRADE A



Current Regal



Charcoal



Evergreen



Flint



Aurora



Glacier



Celeste

GRADE B



Coral Dessert



Tidepool



Viridian



Depth



Merlot



Citrus



Steely

GRADE B



Wallace Blue Jean



Greyhound



Oxford



Black Tie



Rusty

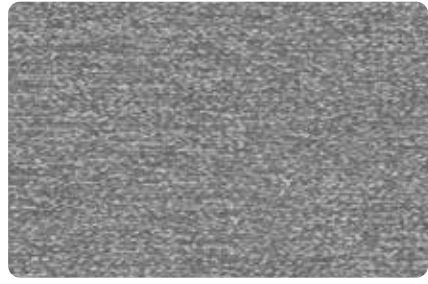


Pear

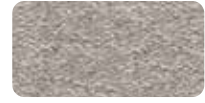


Carbide

GRADE B



Seaside Alloy



Pyrite



Zephyr



Twilight



Emberglow



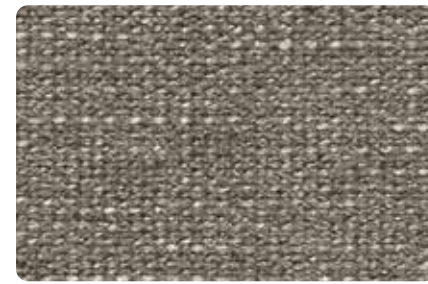
Verdant



Smolder



GRADE C



Coastal Gibraltar



Meridian



Sharkskin



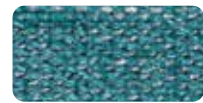
Nightfall



Firefly



Crush

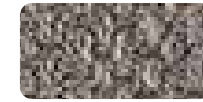


Seaside

GRADE C



Palisades Granite



Castle



Blue Note



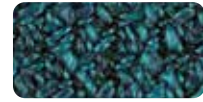
Black Pepper



Dijon



Harvest



Placid

GRADE B



Reef Frost



Platinum



Cinder



Forge



Dijon

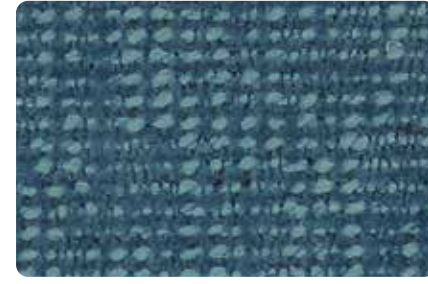


Cerulean



Navy

GRADE B



Marina Lakeview



Driftwood



Dust



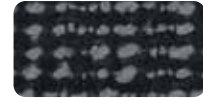
Royal



Apricot



Verdue



Ironclad

GRADE B



Oceanside Sandstone



Freshmint



Aquamarine



Opal



Citrus



Maroon



Noir