

Sil-One Novel

Grade: C

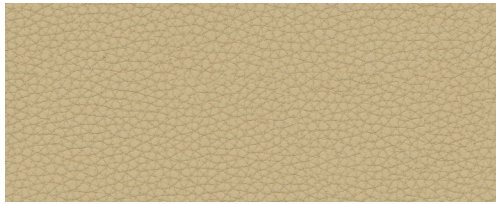
9to5[®]
seating



Eggshell



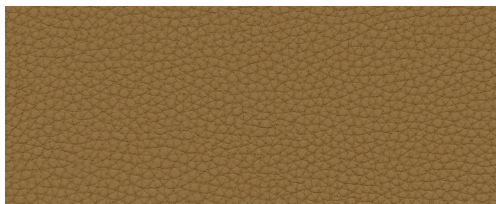
Linen



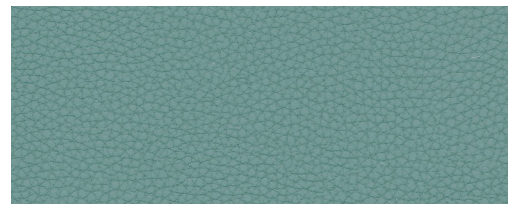
Grain



Fog



Pecan

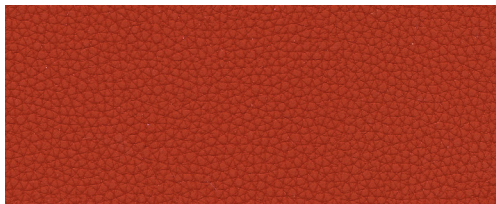


Lagoon

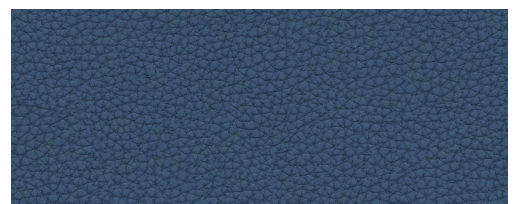
Pattern: Sil-One Novel

Content:
Top - 100% Silicone
Middle - 100% Polyurethane
Grade: C

Abrasion
Resistance: 500,000+
(Double Rubs)



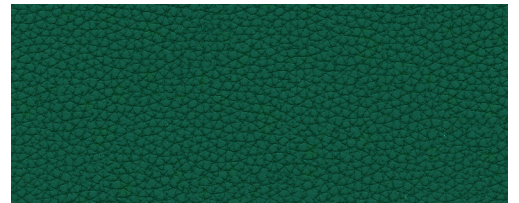
Cherry



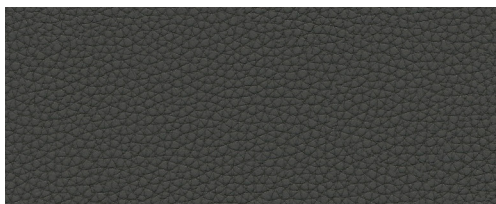
Marine



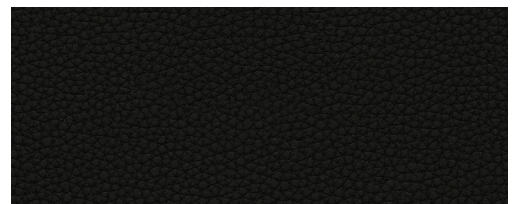
Gravel



Pine



Smoke



Obsidian

info

Sil-One Novel is a high-performance silicone hybrid textile with inherent qualities that make it suitable for all vertical markets.

Pattern Sil-One Novel

Content Top - 100% Silicone
Middle - 100% Polyurethane

Backing 100% Polyester

Finish No Finish, Inherently Ink/Stain/Dye Resistant

Abrasion Resistance
(Double Rubs) 500,000+

Hydrolysis Resistance 15+ Weeks

Cleaning Code WS, BC (10:1)

Performance

- Exceptional Strength With Inherent Resistance To Stains
- Stains And Ink Marks Can Easily Be Wiped With A Dry Towel/Water Or Eraser
- Tested With Over 20+ Healthcare Cleaners Including Bleach
- Silicone Does Not Support Microbiological Growth

Environmental Free of PVC, Formaldehydes, Solvents, Plasticizers, Phthalate, And Lead
Complies with REACH, HHI, Cal 01350, Prop 65 and Red List


Grade C





Sil-One Novel meets or exceeds these ACT Performance standards for upholstery


All patterns are FR free.


Icon Upholstery Definitions

 **Fire Retardancy**
Flammable testing determines as fabric's resistance to burning.
Passes Cal 117-2013.

 **Colorfastness To Wet & Dry Crocking**
The rubbing off of color from the fabric onto clothing, hands or other materials and can occur under wet or dry conditions.
Passes AATCC 8-1974 Dry Crocking. Class 4 minimum, Wet Crocking. Class 4 minimum.

 **Colorfastness to Light**
The degree to which fabric will retain its color when exposed to light. Passes AATCC 16A-1974 or AATCC 16E-1976. Class 4 minimum at 200 Hours.

 **Physical Properties**
Breaking/Tensile Strength Test determines the ability of a fabric to withstand tension without breaking or tearing.
Seam Slippage Test determines the pulling apart of fabrics at the seams.
Breaking Strength ASTM D3597-D1682-64 (1975) 50 lbs. minimum in warp & weft, Seam Slippage ASTM D3597-D434-75 25 lbs. minimum in warp & weft.

 **Abrasion**
The ability of a fabric to withstand damage from wear and rubbing.
Passes Heavy Duty Contract ASTM D4157 (No. 10 cotton duck or wire screen); 50,000 double rubs Wyzenbeek Method

Cleaning Codes

WS: Water-based cleaning agents, foam, or solvent-based cleaners may be used. **CAUTION:** Use of water-based or detergent-based solvents may cause spotting, shrinking and/or permanent water stains. Solvent cleaning agents will remove water stains.

BC: Bleach Cleanable. Bleach cleanability is desirable for any fabric that may need to be disinfected or sterilized. Use a 10:1 water to bleach solution and rinse with water after cleaning.

9to5
seating

PHONE 888.925.SEAT

FAX 866.925.SEAT

EMAIL sales@9to5seating.com

3211 Jack Northrop Ave.
Hawthorne, CA 90250

9to5seating.com
Follow us @9to5seating

