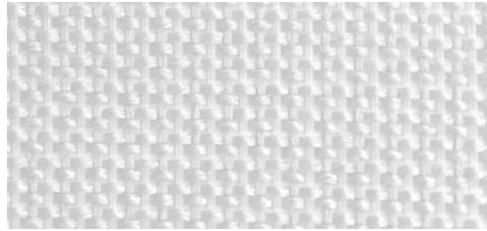
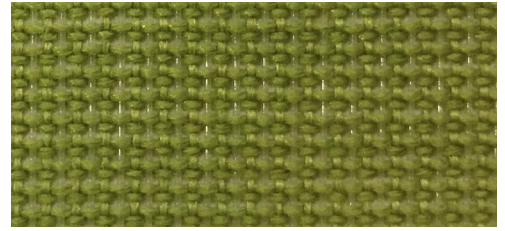


# M4 Mesh



Whisper White M52



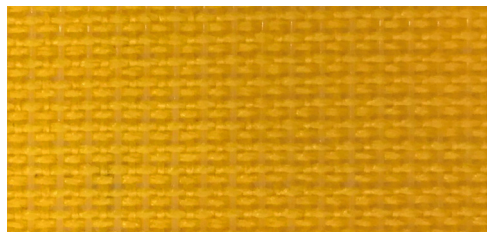
Apple M43



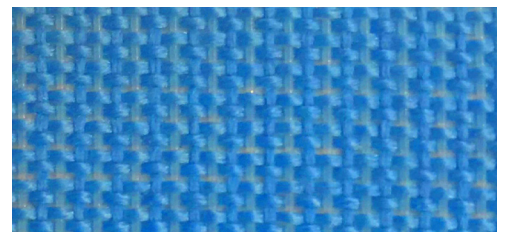
Latte M40



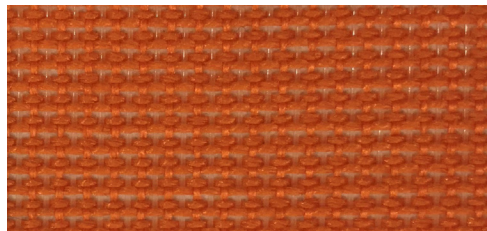
Lagoon M47



Lemon M42



Azure M50



Tangerine M44



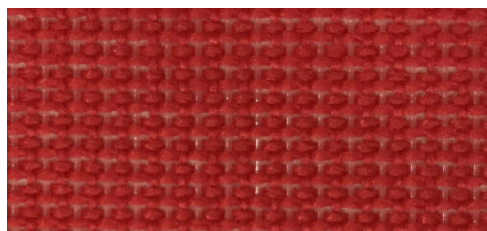
Federal Blue M51

## PATTERN: M4 MESH

68% Polyester, 32% Poly  
Elastomeric

Abrasion: 100,000 Double Rubs

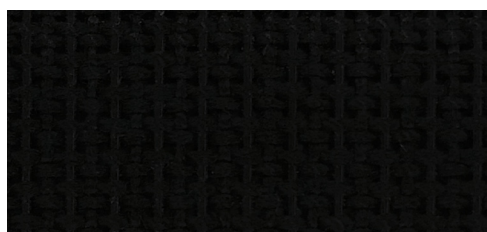
Bleach Cleanable



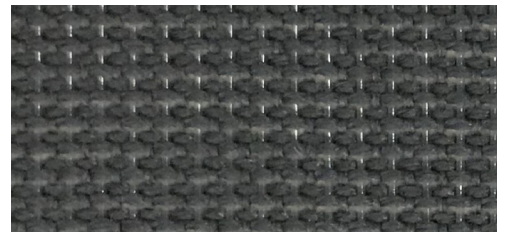
Crimson M46



Cloud M41



Onyx M48



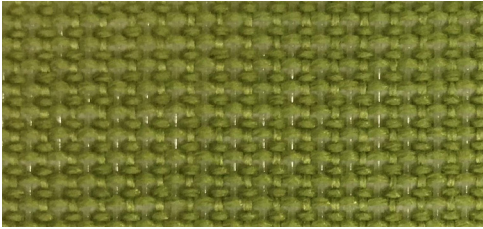
Dove M49



EXPRESSSHIP  
FABRICS



**NEED IT FAST?** We have you covered with a wide variety of mesh options! Our ExpressShip program offers expedited delivery on our seating products, now including M4 mesh. This is in combination with fabrics selected from our 9to5 Seating Signature, Breeze and Nautilus cards.



PATTERN	M4 Mesh
FIBER CONTENT	68% Polyester, 32% Elastomeric
ABRASION	100,000 Double Rubs
APPLICABLE ACT®	
LIGHT-FASTNESS	5-7

All patterns are FR free.

### ICON UPHOLSTERY DEFINITONS



#### FIRE RETARDANCY

Flammable testing determined as fabric's resistance to burning. PASSES - California 117



#### COLORFASTNESS TO WET & DRY CROCKING

Colorfastness to wet & dry crocking refers to the rubbing off of color from the fabric unto clothing, hands or other materials and can occur under wet or dry conditions. PASSES - AATCC 8-1974 Dry Crocking, Class 4 minimum: Wet Crocking, Class 3 minimum.



#### ABRASION

The ability of a fabric to withstand damage from wear and rubbing. Passes Heavy Duty Contract ASTM 3597 modified (No. 10 cotton duck); 30,000 double rubs Wyzenbeek Method or ASTM D4966 modified (with 21 oz. weight); 40,000 rubs Martindale Method.



**HEAVY DUTY:** ASTM 3579 modified (#10 cotton duck); 30,000 double rubs Wyzenbeek Method or ASTM D4966 (with 21oz. weight); 40,000 rubs Martindale Method



#### COLORFASTNESS TO LIGHT

Colorfastness to light is the degree to which fabric will retain its color when exposed to light. PASSES - AATCC 16A-1974 or AATC 16E-1976; Class 4 minimum at 40 Hours. NOTE: Class 4 minimum at 60 hours is recommended for direct sunlight exposure situations.



#### PHYSICAL PROPERTIES

3 Physical property tests include: brush pill test to determine a fabric's pilling. Breaking/tensile strength is the ability of a fabric to withstand tension without breaking or tearing. Seam slippage is the pulling apart of fabrics at the seam. PASSES - Brush Pill ASTM D3511, 3-4 minimum. Breaking Strength ASTM D3597-D1682-64 (1975) 50lbs. minimum in warp & weft Seam Slippage ASTM D3597-D434-75 25lbs. minimum in warp & weft.

### CLEANING CODE

**WS:** Water-based cleaning agents or foam may be used.

**CAUTION:** Use of water-based or detergent-based solvents may cause spotting, shrinking and/or permanent water stains. Solvent cleaning agents will remove water stains.

**BC:** Bleach Cleanable. Bleach cleanability is desirable for any fabric that may need to be disinfected or sterilized. Use a 10:1 water to bleach solution and rinse with water after cleaning.

Choose from over 1,000 textiles offered by C.F. Stinson, DesignTex, Maharam, Momentum, and 9to5 Seating's Signature, Breeze and Nautilus Cards. In the rare case we don't have what you're looking for, we'll upholster your chair in any fabric provided to us!

**Lifetime Warranty** on all structural and mechanical components. Fabric and foam are warranted against wear through and deterioration for five years.

Part of the Flokk Group



Additional Product Materials



Follow us @9to5seating



9to5seating.com  
3211 Jack Northrop Ave.  
Hawthorne, CA 90250  
P: 888.925.SEAT  
F: 866.925.SEAT  
E: sales@9to5seating.com