

nautilus

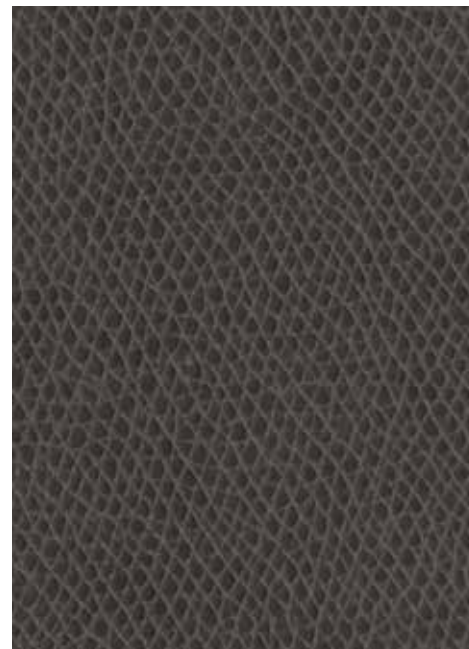
COLLECTION



Nickel

Maritime

Bradford



Chateau



info

Pattern	Fiber Content/Backing	Abrasion Resistance (Double Rubs)	Finish	Cleaning Code	Grade
Ace	100% Vinyl 85% Polyester, 15% Cotton Backing	100,000	Antimicrobial	WS BC (5:1)	B
Delta	100% Polyurethane 87% Polyester, 13% Cotton Backing	200,000	i-clean™ + Antimicrobial	WS BC (10:1)	B
Hemingway	100% Vinyl 100% Polyester Backing	100,000	i-clean™ + Antimicrobial	WS BC (10:1)	B
Pauly	100% Vinyl	100,000	Water Repellent	WS BC (10:1)	A
Promenade	100% Polyurethane 70% Polyester, 30% Cotton Backing	200,000	i-clean™ + Antimicrobial	WS BC (5:1)	B
Tailored	100% Polyurethane 70% Polyester, 30% Cotton Backing	200,000	i-clean™ + Antimicrobial	WS BC (5:1)	B
Vintner	100% Polyurethane 79% Polyester, 15% Cotton, 6% Rayon Backing	200,000	i-clean™ + Antimicrobial	WS BC (5:1)	B

A These patterns meet or exceed these ACT Performance standards for upholstery.

All patterns meet the BIFMA HCF 8.1-2019 healthcare furniture guidelines for cleanability.
All patterns are FR free.

Icon Upholstery Definitions

- Fire Retardancy**
Flammable testing determines a fabric's resistance to burning. Passes Cal 117.
- Colorfastness To Wet & Dry Crocking**
The rubbing off of color from the fabric onto clothing, hands or other materials and can occur under wet or dry conditions. Passes AATCC 8-1974 Dry Crocking. Class 4 minimum, Wet Crocking. Class 3 minimum.
- Colorfastness to Light**
The degree to which fabric will retain its color when exposed to light. Passes AATCC 16A-1974 or AATCC 16E-1976. Class 4 minimum at 40 Hours. Note: Class 4 minimum at 60 hours is recommended for direct sunlight exposure.
- Physical Properties**
Brush Pill Test determines a fabric's pilling. Breaking/Tensile Strength Test determines the ability of a fabric to withstand tension without breaking or tearing. Seam Slippage Test determines the pulling apart of fabrics at the seams. Passes Brush Pill ASTM D3511, 3-4 minimum. Breaking Strength ASTM D3597-D1682-64 (1975) 50 lbs. minimum in warp & weft, Seam Slippage ASTM D3597-D434-75 25 lbs. minimum in warp & weft.
- Abrasion**
The ability of a fabric to withstand damage from wear and rubbing. Passes Heavy Duty Contract ASTM 3597 modified (No. 10 cotton duck); 30,000 double rubs Wyzenbeek Method or ASTM D4966 modified (with 21 oz. weight); 40,000 rubs Martindale Method.

Cleaning Codes

WS: Water-based cleaning agents, foam, or solvent-based cleaners may be used. CAUTION: Use of water-based or detergent-based solvents may cause spotting, shrinking and/or permanent water stains. Solvent cleaning agents will remove water stains.

BC: Bleach Cleanable. Bleach cleanability is desirable for any fabric that may need to be disinfected or sterilized. Use a 5:1 or 10:1 water to bleach solution and rinse with water after cleaning.

Finish Definitions

i-clean™ is a high-performance stain and moisture repellent based on nanotechnology.

Antimicrobial Finish is a silver-based inorganic antimicrobial agent.

Water Repellent repels most water and oil but is not thoroughly waterproof.



PHONE 888.925.SEAT
FAX 866.925.SEAT
EMAIL sales@9to5seating.com

3211 Jack Northrop Ave.
Hawthorne, CA 90250
9to5seating.com
Follow us @9to5seating





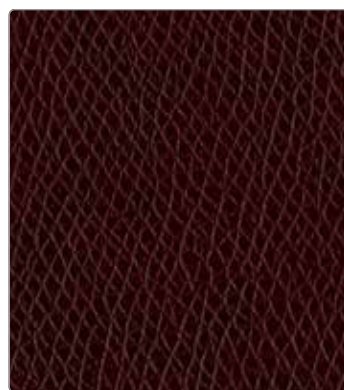
Tailored (TL) - Whisper



Pauly (PL) - Saddle



Vintner (VT) - Bradford



Promenade (PM) - Garnet



PL - White



VT - Travertine



AC - Frost



DL - Shortbread



DL - Malt



HW - Jute



PM - Fawn



PL - Camel



VT - Derby



PL - Alabaster



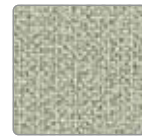
VT - Antique



DL - Ridge



PL - Straw



TL - Marl



AC - Bluff



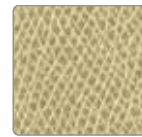
HW - Barrel



PM - Fiddle



PM - Umber



PM - Chamois



PL - Mushroom



HW - Shore



PM - Copper



PM - Wheat



VT - Claret



AC - Boysenberry



HW - Cigar



PL - Mahogany



TL - Glow



HW - Sunrise



AC - Marigold



AC - Koi



HW - Hibiscus



AC - Flamenco



PL - Lipstick



VT - Brick



PL - Café



Ace (AC) - Nickel



Hemingway (HW) - Parakeet



Ace (AC) - Danube



Delta (DL) - Blazer



DL - Pistachio



PM - Bamboo



AC - Olive



TL - Bermuda



PM - Cabana



TL - Sapphire



VT - Dakota



PM - Rhino



PL - Baltic



DL - Spa



HW - Sail



AC - Aquarius



AC - Bluebell



TL - Concord



PM - Mood Indigo



PL - Ash



AC - Domino



VT - Providence



HW - Seersucker



AC - Fog



PM - Chateau



HW - Forge



DL - Grape



AC - Atlantic



PL - Thunder



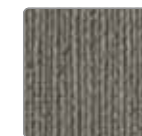
HW - Inkwell



PM - Darkness



HW - Sea Salt



HW - Haze



PL - Mist



PM - Spur



TL - Cypress



HW - Oyster Gray



HW - Maritime



VT - Raven



PL - Black