

# vivid fabrics

Grade: A

9to5<sup>®</sup>  
s e a t i n g



Latte



Cloud



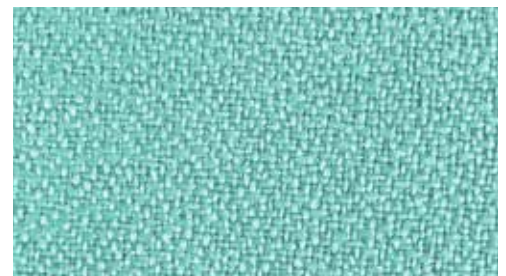
Lemon



Apple



Tangerine



Aqua

Pattern: Vivid  
100% Polyester  
Grade: A

Abrasion: 250,000  
Double Rubs



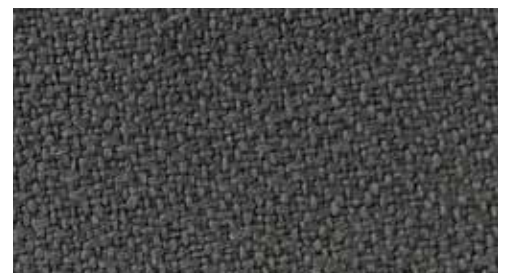
Crimson



Electric Blue



Onyx



Dove

  
EXPRESSSHIP  
FABRICS

## 9to5 Seating's Express Ship Fabric Program

**Need it fast?** We have you covered with a wide variety of upholstery options!

Our Express Ship program offers expedited delivery on our seating products, now including Vivid mesh and fabric options. This is in combination with our 9to5 Seating Signature Express Ship Card.

# info

<b>Pattern</b>	Vivid
<b>Fiber Content</b>	100% Polyester
<b>Abrasion</b>	250,000
<b>Applicable ACT®</b>	    
<b>Light-fastness</b>	40 Hrs. Class 4
<b>Cleaning Code</b>	W: Water-Based cleaning agents or foam may be used
<b>Grade</b>	A

Memo samples available.

Please contact the factory for larger swatches.

### Icon Upholstery Definitions



#### Fire Retardancy

Flammable testing determined as fabric's resistance to burning.

PASSES - California 117



#### Colorfastness To Wet & Dry Crocking

Colorfastness to wet & dry crocking refers to the rubbing off of color from the fabric onto clothing, hands or other materials and can occur under wet or dry conditions.

PASSES - AATCC 8-1974 Dry Crocking, Class 4 minimum; Wet Crocking, Class 3 minimum.

#### Abrasion

Abrasion is the ability of fabric to withstand damage from wear and rub. This is a general contract specification as well as a heavy duty specification.

PASSES -



General Contact: ASTM 3579 modified (#10 cotton duck); 15,000 double rubs Wyzenbeek Method



Heavy Duty: ASTM 3579 modified (#10 cotton duck); 30,000 double rubs Wyzenbeek Method or ASTM D4966 (with 21oz. weight); 40,000 rubs Martindale Method



#### Colorfastness to Light

Colorfastness to light is the degree to which fabric will retain its color when exposed to light.

PASSES - AATCC 16A-1974 or AATCC 16E-1976; Class 4 minimum at 40 Hours. NOTE: Class 4 minimum at 60 hours is recommended for direct sunlight exposure situations.



#### Physical Properties

3 Physical property tests include: brush pill test to determine a fabric's pilling. Breaking/tensile strength is the ability of a fabric to withstand tension without breaking or tearing. Seam slippage is the pulling apart of fabrics at the seam.

PASSES - Brush Pill ASTM D3511, 3-4 minimum. Breaking Strength ASTM D3597-D1682-64 (1975) 50lbs. minimum in warp & weft Seam Slippage ASTM D3597-D434-75 25lbs. minimum in warp & weft.

**9to5<sup>®</sup>**  
seating

3211 Jack Northrop Ave.  
Hawthorne, CA 90250

**PHONE**  
888.925.SEAT

**FAX**  
866.925.SEAT

**EMAIL**  
sales@9to5seating.com

**9to5seating.com**  
Follow us: @9to5seating

