

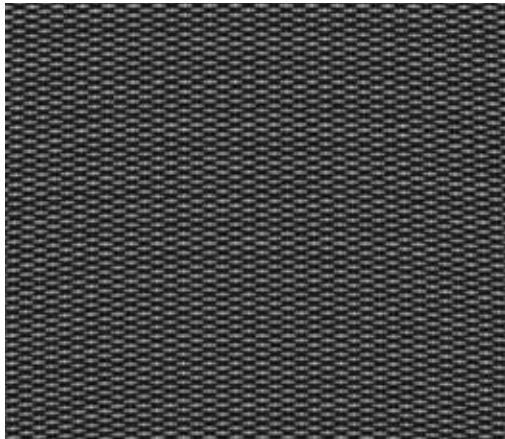
M6 Mesh

Pattern: M6 Mesh

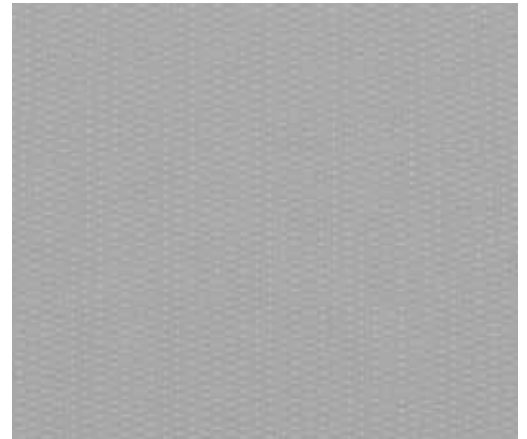
Content:
57% Polyester
43% Polyelastomeric

Abrasion
Resistance: 100,000
(Double Rubs)

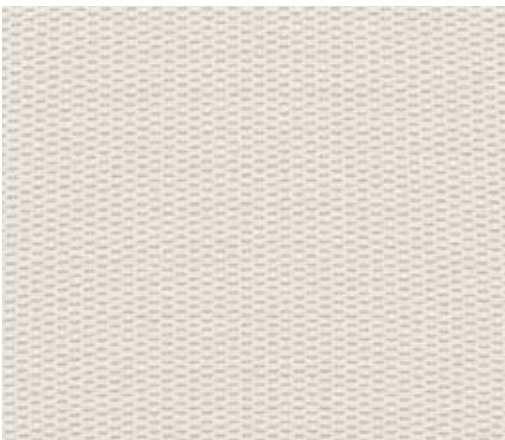
Soil and Stain
Resistant



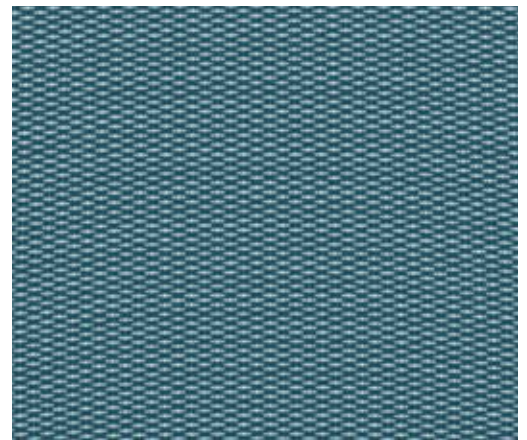
Black M61



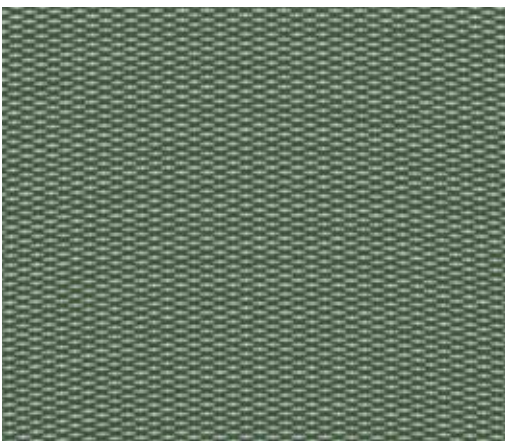
Gray M62



White M63








Blue M64



Green M65

info

Pattern	M6 Mesh
Content	57% Polyester, 43% Polyelastomeric
Abrasion Resistance (Double Rubs)	100,000
Cleaning Code	W
    	M6 Mesh meets or exceeds these ACT Performance standards for upholstery

Icon Upholstery Definitions



Fire Retardancy

Flammable testing determines as fabric's resistance to burning. Passes Cal 117.



Colorfastness To Wet & Dry Crocking

The rubbing off of color from the fabric onto clothing, hands or other materials and can occur under wet or dry conditions. Passes AATCC 8-1974 Dry Crocking. Class 4 minimum, Wet Crocking. Class 3 minimum.



Colorfastness to Light

The degree to which fabric will retain its color when exposed to light. Passes AATCC 16A-1974 or AATCC 16E-1976. Class 4 minimum at 40 Hours. Note: Class 4 minimum at 60 hours is recommended for direct sunlight exposure.



Physical Properties

Brush Pill Test determines a fabric's pilling. Breaking/Tensile Strength Test determines the ability of a fabric to withstand tension without breaking or tearing. Seam Slippage Test determines the pulling apart of fabrics at the seams. Passes Brush Pill ASTM D3511, 3-4 minimum. Breaking Strength ASTM D3597-D1682-64 (1975) 50 lbs. minimum in warp & weft, Seam Slippage ASTM D3597-D434-75 25 lbs. minimum in warp & weft.



Abrasion

The ability of a fabric to withstand damage from wear and rubbing. Passes Heavy Duty Contract ASTM 3597 modified (No. 10 cotton duck); 30,000 double rubs Wyzenbeek Method or ASTM D4966 modified (with 21 oz. weight); 40,000 rubs Martindale Method.

Cleaning Codes

W: Water-based cleaning agents or foam may be used.

CAUTION: Use of water-based or detergent-based solvents may cause spotting, shrinking and/or permanent water stains. Solvent cleaning agents will remove water stains.



PHONE 888.925.SEAT

FAX 866.925.SEAT

EMAIL sales@9to5seating.com

3211 Jack Northrop Ave.
Hawthorne, CA 90250

9to5seating.com

Follow us @9to5seating

