

9to5<sup>®</sup>  
seating

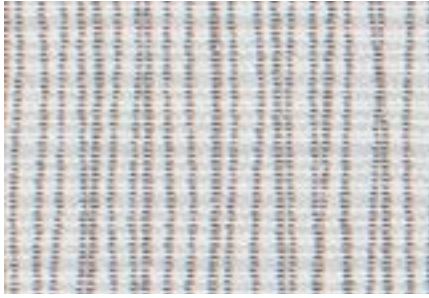


EXPRESSSHIP  
FABRICS

# swift



MOMENTUM GROUP



GRAPH ALPINE



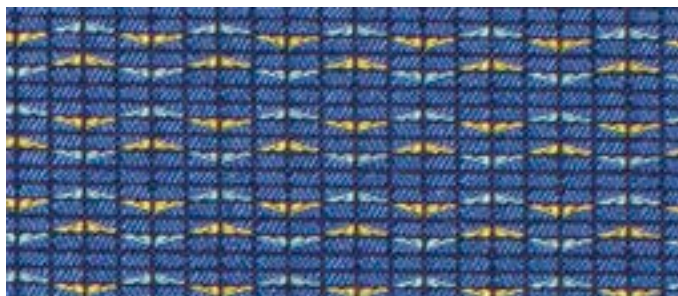
ORIGIN EUREKA



KNACK FILAMENT



BEELINE TIDAL



SLICE ADMIRAL



POPPY



PARROT



ECO



SODALITE



TEAK



REED



SPROUT



GEYSER



TIDAL



LAPIS



GARNET



IRON



ZING



FRESCO



NIMBUS



PORTOBELLO



MILLER



HENNA



BARK



COAL



SAPPHIRE



JET



BRISK



CARBON



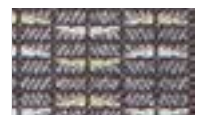
FORGE



WALNUT

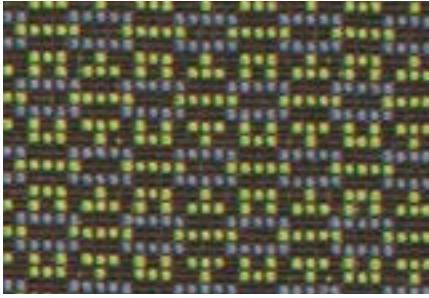


PUMICE

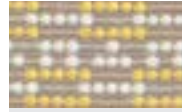


CHARCOAL





BOBBY MOSS



LEMON



GLOW



AQUA



FUSCHSIA



IRIS



ANCHOR



FUSE LUNAR



PRISTINE



GINGER



WALNUT



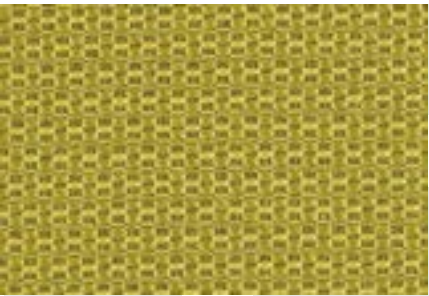
AZUREAN



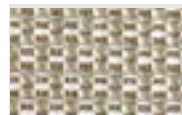
CARMINE



PEPPER



EPIC KIWI



LIMESTONE



SLICE



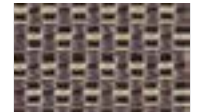
PORCINI



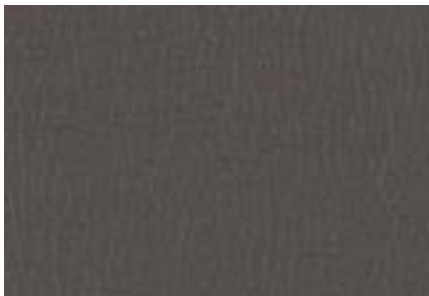
AZURE



STEEL



GRANITE



CANTER IRON



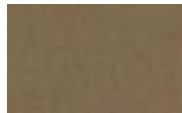
SAND



SAFARI



SABLE



EARTH



NIGHT



ONYX



PARENTHESIS STEEL



VIOLET



LIME



CAPRI


















CHARCOAL

# 9to5 Seating's ExpressShip Fabric Program

**Need it fast?** We have you covered with a wide variety of upholstery options!  
Our ExpressShip program offers expedited shipment on our seating products. The ExpressShip Program includes Swift, 9to5 Signature, M1, M2, M3 Mesh and our new M4 Mesh and Vivid fabric collections.

# info

Width - Pattern	Fiber Content & Backing	Finish	Abrasion (D.R.)	Lightfastness	Approximate Repeats	Cleaning Code	Grade
54" Beeline     	100% Polyurethane / PVC Free Polyester Backing		500,000	200 Hours Class 4.5		W Bleach Cleanable (4:1)	C
54" Bobby     	68% Repreve® Post Consumer Recycled Polyester, 32% Polyester Acrylic Backing		150,000	40 Hours Class 3.5	7/8" L 1/2" W	WS	C
54" Canter     	100% Polyurethane / PVC Free Polyester Backing		240,000	200 Hours Class 4.5		W Bleach Cleanable (4:1)	C
54" Epic     	50% Polyester, 32% Post Industrial Recycled Polyester, 18% Post Consumer Recycled Polyester, Acrylic Backing	Soil and Stain Resistant	100,000	40 Hours Class 5	3/8" L 1/8" W	WS	D
54" Fuse     	65% Post Industrial Recycled Polyester, 35% Post Consumer Recycled Polyester, Latex Backing	Soil and Stain Resistant	100,000	40 Hours Class 4.5		W	C
56" Graph     	75% Repreve® Post Consumer Recycled Polyester, 25% Polyester Acrylic Backing		170,000	40 Hours Class 5	3 3/8" L 7 1/2" W	WS	C
54" Knack     	100% Post Consumer Recycled Polyester Acrylic Backing	Soil and Stain Resistant	100,000	40 Hours Class 5	1 5/8" L 1 3/4" W	WS	D
58" Origin     	100% Post Consumer Recycled Polyester Acrylic Backing	Soil and Stain Resistant	282,000	40 Hours Class 4		WS	B
54" Parenthesis     	50% Repreve® Post Consumer Recycled Polyester, 50% Polyester Acrylic Backing		165,000	40 Hours Class 4.5	9 7/8" L 1 1/8" W	WS	C
54" Slice     	84% Repreve® Post Consumer Recycled Polyester, 16% Polyester Acrylic Backing		80,000	40 Hours Class 5	7/8" L 3/4" W	WS	C

\*ACT® Registered Certification Marks

## Icon Upholstery Definitions



### Fire Retardancy

Flammable testing determined as fabric's resistance to burning.  
PASSES - California 117



### Colorfastness To Wet & Dry Crocking

Colorfastness to wet & dry crocking refers to the rubbing off of color from the fabric unto clothing, hands or other materials and can occur under wet or dry conditions.  
PASSES - AATCC 8-1974 Dry Crocking, Class 4 minimum: Wet Crocking, Class 3 minimum.

### Abrasion

Abrasion is the ability of fabric to withstand damage from wear and rub. This is a general contract specification as well as a heavy duty specification.  
PASSES -  
General Contact: ASTM 3579 modified (#10 cotton duck); 15,000 double rubs Wyzenbeek Method



Heavy Duty: ASTM 3579 modified (#10 cotton duck); 30,000 double rubs Wyzenbeek Method or ASTM D4966 (with 21oz. weight); 40,000 rubs Martindale Method



### Colorfastness to Light

Colorfastness to light is the degree to which fabric will retain its color when exposed to light.  
PASSES - AATCC 16A-1974 or AATC 16E-1976; Class 4 minimum at 40 Hours. NOTE: Class 4 minimum at 60 hours is recommended for direct sunlight exposure situations.



### Physical Properties

3 Physical property tests include: brush pill test to determine a fabric's pilling. Breaking/tensile strength is the ability of a fabric to withstand tension without breaking or tearing. Seam slippage is the pulling apart of fabrics at the seam.  
PASSES - Brush Pill ASTM D3511, 3-4 minimum. Breaking Strength ASTM D3597-D1682-64 (1975) 50lbs. minimum in warp & weft Seam Slippage ASTM D3597-D434-75 25lbs. minimum in warp & weft.

### Cleaning Code Definition

W: Water-based foam or cleaner  
WS: Water-based cleaning agents or foam.



PHONE 888.925.SEAT

FAX 866.925.SEAT

EMAIL sales@9to5seating.com

3211 Jack Northrop Ave.  
Hawthorne, CA 90250

9to5seating.com  
Follow us @9to5seating



For memo samples please contact:

**MOMENTUM**  
T E X T I L E S

Toll Free 800-366-6839  
memosamples.com