

MOMENTUM TEXTILES

PERFORMANCE 3.0



info

Width - Pattern	Fiber Content & Backing	Finish	Abrasion (D.R.)	Lightfastness	Approximate Repeats	Cleaning Code	Grade
54" Beeline EPU	100% EPU Polyurethane Polyester Backing		900,000	200 Hours Class 4		W Bleach Cleanable (4:1)	C
54" Canter EPU	100% EPU Polyurethane Polyester Backing		1,000,000	200 Hours Class 4		W Bleach Cleanable (4:1)	B
59" Cover Cloth	56% Repreve® Post Consumer Recycled Polyester, 44% Polyester	Crypton® Green	200,000	40 Hours Class 4		W Bleach Cleanable (10:1)	E
54" Endurance EPU	100% EPU Polyurethane Polyester Backing		1,000,000	200 Hours Class 4		W Bleach Cleanable (4:1)	E
54" Eon EPU	100% EPU Polyurethane Polyester Backing		900,000	200 Hours Class 4	5/8" L 5/8" W	W Bleach Cleanable (4:1)	D
56" Faux Felt	62% Repreve® Post Consumer Recycled Polyester, 38% Polyester	Crypton® Green	75,000	40 Hours Class 4.5		WS Bleach Cleanable (10:1)	E
54" Silica	100% Silicone Polyester Backing		365,000	200 Hours Class 4.5		WS Bleach Cleanable (4:1)	G
54" Silica Leather	100% Silicone Polyester Backing		210,000	200 Hours Class 4		WS Bleach Cleanable (4:1)	G
54" Silica Stride	100% Silicone Polyester Backing		500,000	200 Hours Class 4.5	24 3/4" L 24 3/4" W	WS Bleach Cleanable (4:1)	G
57" Solitaire	50% Repreve® Post Consumer Recycled Polyester, 50% Polyester		200,000	40 Hours Class 4	1/8" L 1/8" W	W Bleach Cleanable (10:1)	E



These patterns meet or exceed these ACT Performance Guidelines for upholstery.

All patterns are FR free.

Icon Upholstery Definitions

- Fire Retardancy**
Flammable testing determined as fabric's resistance to burning.
PASSES - California 117
- Colorfastness To Wet & Dry Crocking**
Colorfastness to wet & dry crocking refers to the rubbing off of color from the fabric unto clothing, hands or other materials and can occur under wet or dry conditions.
PASSES - AATCC 8-1974 Dry Crocking, Class 4 minimum; Wet Crocking, Class 3 minimum.
- Abrasion**
Abrasion is the ability of fabric to withstand damage from wear and rub. This is a general contract specification as well as a heavy duty specification.
PASSES -
 - General Contact: ASTM 3579 modified (#10 cotton duck); 15,000 double rubs Wyzenbeek Method
 - Heavy Duty: ASTM 3579 modified (#10 cotton duck); 30,000 double rubs Wyzenbeek Method or ASTM D4966 (with 21oz. weight); 40,000 rubs Martindale Method
- Colorfastness to Light**
Colorfastness to light is the degree to which fabric will retain its color when exposed to light.
PASSES - AATCC 16A-1974 or AATC 16E-1976; Class 4 minimum at 40 Hours. NOTE: Class 4 minimum at 60 hours is recommended for direct sunlight exposure situations.

- Physical Properties**
3 Physical property tests include: brush pill test to determine a fabric's pilling. Breaking/tensile strength is the ability of a fabric to withstand tension without breaking or tearing. Seam slippage is the pulling apart of fabrics at the seam.
PASSES - Brush Pill ASTM D3511, 3-4 minimum. Breaking Strength ASTM D3597-D1682-64 (1975) 50lbs. minimum in warp & weft. Seam Slippage ASTM D3597-D434-75 25lbs. minimum in warp & weft.

Cleaning Code Definition
W: Water-based foam or cleaner
WS: Water-based cleaning agents or foam



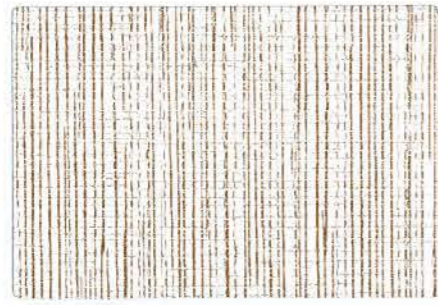
PHONE 888.925.SEAT
FAX 866.925.SEAT
EMAIL sales@9to5seating.com

3211 Jack Northrop Ave.
Hawthorne, CA 90250
9to5seating.com
Follow us @9to5seating



For memo samples please contact:
MOMENTUM Textiles Toll Free 800-366-6839
memosamples.com

Grade C



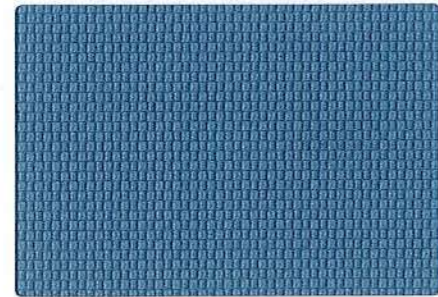
Beeline EPU Canvas

Grade E



Endurance EPU Bluebell

Grade D



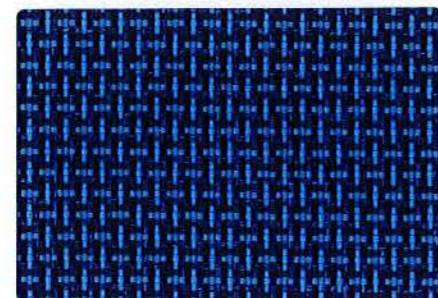
Eon EPU Cove

Grade B



Canter EPU Summer White

Grade E



Solitaire Lapis



Fossil



Oriole



Nimbus



Geyser



Portobello



Forge



Gull



Smith



Plum



Tobacco



Cascade



Jetty



Anew



Blaze



Omega



Spring



Mineral



Typographic



Folkstone Grey



Ballad



Iron



Earth



Ink



Onyx



Tinsel



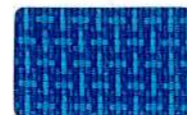
Aztec



Jubilee



Smith



Cyan



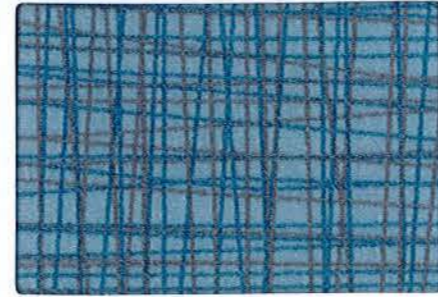
Galena

Grade E



Cover Cloth Platinum

Grade G



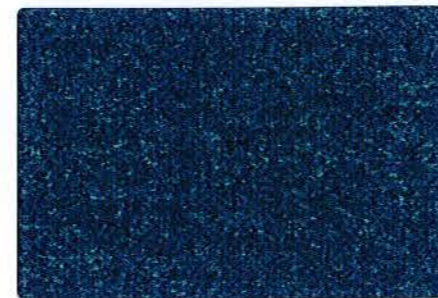
Silica Stride Placid

Grade G



Silica Cumulus

Grade E



Faux Felt Pool

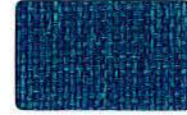
Grade G



Silica Leather Ink



Sorrel



Cyan



Indigo



Zest



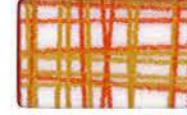
Vesper



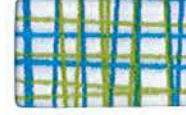
Graphite



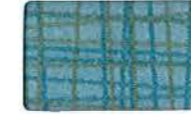
Ecrú



Koi



Resort



Tidal



Limestone



Contrast



Quartz



Tropic



Alloy



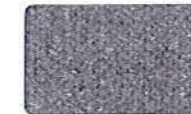
Marigold



Gallant



Nero



Stone



Pebble



Vibrant



Sprout



Quail



Charcoal



Almond



Dove



Saddle



Lichen



Mink



Shadow