

9to5 Signature Card 4.0



9to5 Seating’s ExpressShip Fabric Program

Need it fast? We have you covered with a wide variety of upholstery options! Our ExpressShip program offers expedited shipment on our seating products, now including the Signature Card. Other ExpressShip fabric options include the 9to5 Seating Breeze Collection and Vivid cards. Memo samples are available. Please contact the factory for larger swatches.

info

Pattern	Content	Abrasion Resistance (Double Rubs)	Finish	Cleaning Code	Grade
Air Grid Mesh	100% Polyester	250,000	Water Repellent	W	A/T01
Mesh M0	Polyester & Polyelastomer	100,000	Water Repellent	W	M0
Crepe	100% Polyester	250,000	Water Repellent	W	A
Matrix	100% Polyester	100,000	Water Repellent	W	A
Bingo	100% Polyester	100,000	Water Repellent	W	A
Mosaic	100% Polyester	100,000	Water Repellent	W	A
Tango	100% Polyester	100,000	Water Repellent	W	A
Avant	100% Polyester	100,000	Water Repellent	W	B
Pauly	100% Vinyl/PVC-Free Polyester Backing	100,000	Water Repellent	W, BC	A
<div><div></div><div>These patterns meet or exceed these ACT Performance standards for upholstery.</div></div>					

All patterns are FR free.

Icon Upholstery Definitions



Fire Retardancy
Flammable testing determines as fabric's resistance to burning. Passes Cal 117.



Colorfastness To Wet & Dry Crocking
The rubbing off of color from the fabric onto clothing, hands or other materials and can occur under wet or dry conditions. Passes AATCC 8-1974 Dry Crocking. Class 4 minimum, Wet Crocking. Class 3 minimum.



Colorfastness to Light
The degree to which fabric will retain its color when exposed to light. Passes AATCC 16A-1974 or AATCC 16E-1976. Class 4 minimum at 40 Hours. Note: Class 4 minimum at 60 hours is recommended for direct sunlight exposure.



Physical Properties
Brush Pill Test determines a fabric's pilling. Breaking/Tensile Strength Test determines the ability of a fabric to withstand tension without breaking or tearing. Seam Slippage Test determines the pulling apart of fabrics at the seams. Passes Brush Pill ASTM D3511, 3-4 minimum. Breaking Strength ASTM D3597-D1682-64 (1975) 50 lbs. minimum in warp & weft, Seam Slippage ASTM D3597-D434-75 25 lbs. minimum in warp & weft.



Abrasion
The ability of a fabric to withstand damage from wear and rubbing. Passes Heavy Duty Contract ASTM 3597 modified (No. 10 cotton duck); 30,000 double rubs Wyzenbeek Method or ASTM D4966 modified (with 21 oz. weight); 40,000 rubs Martindale Method.

Cleaning Codes

W: Water-based cleaning agents or foam may be used.

BC: Bleach Cleanable. Bleach cleanability is desirable for any fabric that may need to be disinfected or sterilized. Use a 10:1 water to bleach solution and rinse with water after cleaning.



PHONE 888.925.SEAT
FAX 866.925.SEAT
EMAIL sales@9to5seating.com

3211 Jack Northrop Ave.
Hawthorne, CA 90250
9to5seating.com
Follow us @9to5seating



Crepe



Beige

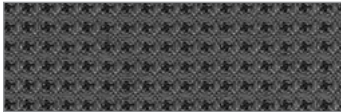
Matrix



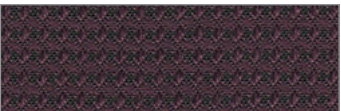
Champagne



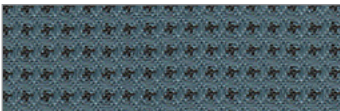
Fern



Lead



Plum



Peacock

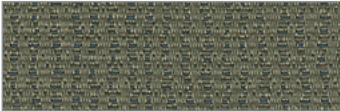


Coal

Bingo



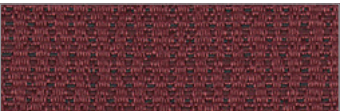
Champagne



Green



Gray



Cherry



Navy



Black

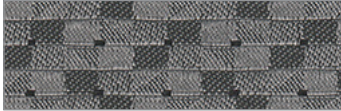
Mosaic



Camel



Latte



Slate



Flame

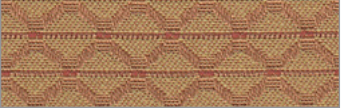


Ocean

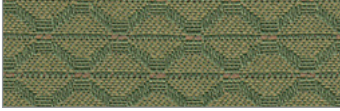


Nightfall

Tango



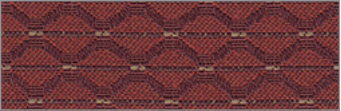
Honey



Wasabi



Bark

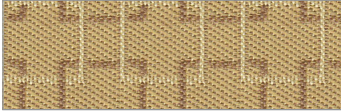


Ruby

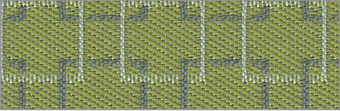


Charcoal

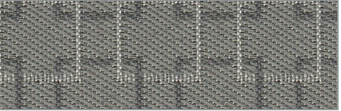
Avant



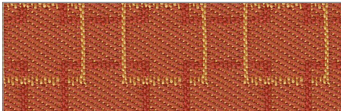
Waffle



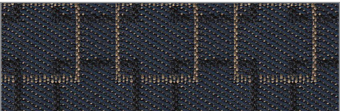
Spruce



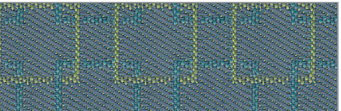
Steel



Chai

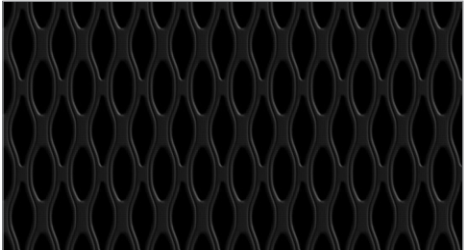


Denim



Reef

Air Grid Mesh T01



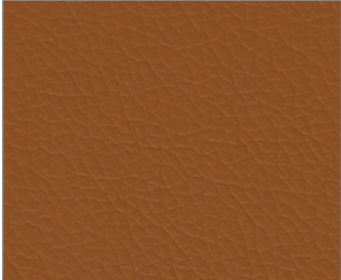
Black

Mesh Pattern M0



Black

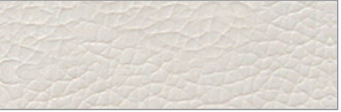
Pauly



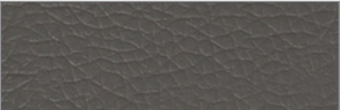
Camel



Black



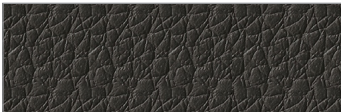
White



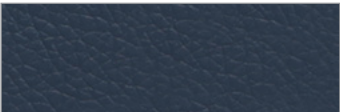
Ash



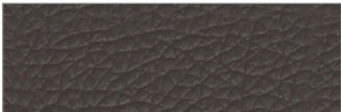
Mist



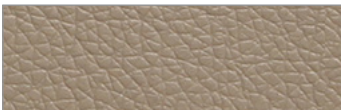
Thunder



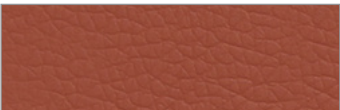
Baltic



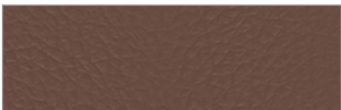
Cafe



Mushroom



Saddle



Mahogany



Straw