

swift 2.0

9to5[®]
seating

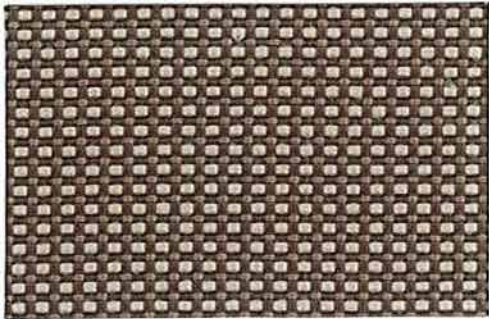


EXPRESSSHIP
FABRICS

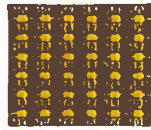


MOMENTUM
TEXTILES & WALLCOVERING

Grade C



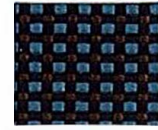
Grid Chrome



Sunbeam



Surf



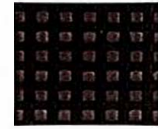
Indigo



Flint

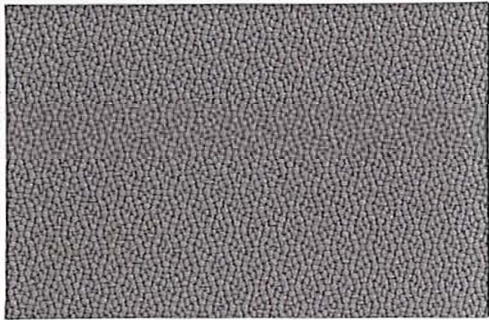


Khaki

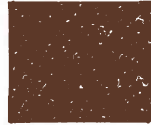


Jet

Grade B



Origin Alloy



Arundel



Indigo



Sapphire



Iron

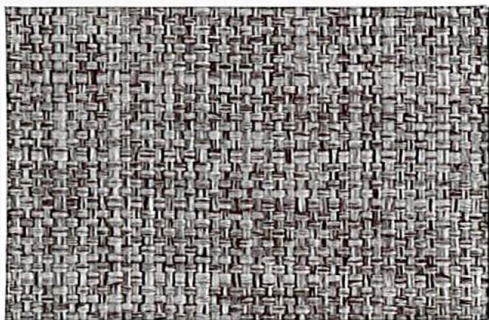


Poppy



Jet

Grade D



Mello Mineral



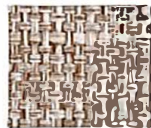
Zest



River



Ink



Parchment



Ash

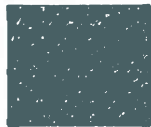


Sable

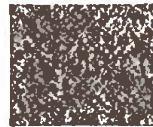
Grade D



Feltro Cloud



Spa



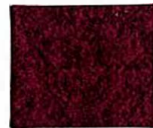
Steel



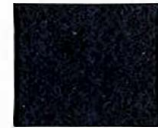
Dusk



Birch



Berry

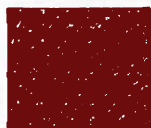


Ink

Grade D



Guru Morel



Sumac



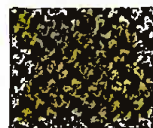
Tahoe



Pewter



Tawny



Kiwi



Onyx

Grade C



Beeline EPU Oat



Sprout



Walnut



Eclipse



Jetty



Lake



Tidal

Grade C



Canter EPU Quarry



Nimbus



Kiwi Green



Bordeaux



Storm

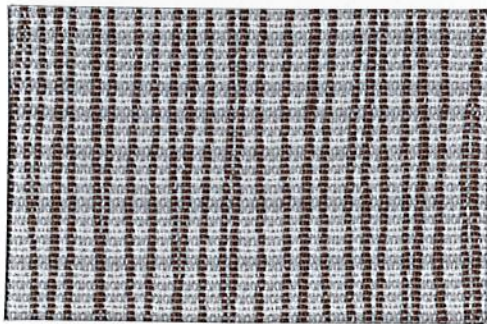


Night



Onyx

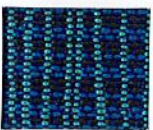
Grade C



Graph Alpine



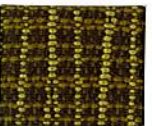
Ruby



Wave



Anchor



Parrot



Chalice



Coal

Grade D



Deka Bisque



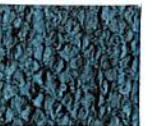
Desert



Peridot



Garnet



Refresh

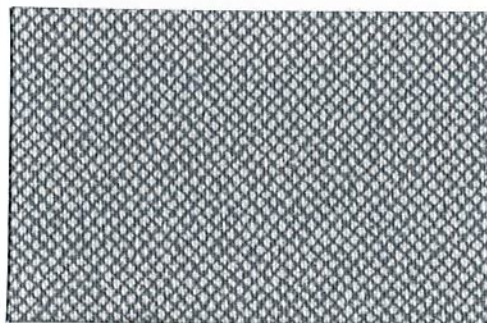


Nordic



Charcoal

Grade D



Tribeca CV Cloud



Downpour



Airy



Mariner



Mica



Cascade



Griffin

9to5 Seating's ExpressShip Fabric Program

Need it fast? We have you covered with a wide variety of upholstery options! Our ExpressShip program offers expedited shipment on our seating products. The ExpressShip Program includes Momentum Swift 2.0 and the 9to5 Seating cards including Signature, Nautilus, Breeze, Vivid, M1, M2, M3 and M4.

info

Width - Pattern	Fiber Content & Backing	Finish	Abrasion (D.R.)	Lightfastness	Approximate Repeats	Cleaning Code	Grade
54" Beeline EPU 	100% EPU Polyurethane Polyester Backing		900,000	200 Hours Class 4		W Bleach Cleanable (4:1)	C
54" Canter EPU 	100% EPU Polyurethane Polyester Backing		1,000,000	200 Hours Class 4		W Bleach Cleanable (4:1)	C
56" Graph 	75% Repreve® Post Consumer Recycled Polyester, 25% Polyester Acrylic Backing		170,000	40 Hours Class 5	3 3/8" L 7 1/2" W	W	C
58" Origin 	100% Post Consumer Recycled Polyester Acrylic Backing		282,000	40 Hours Class 4		WS	B
56" DeKa 	63% Post Consumer Recycled Polyester, 37% Polyester Acrylic Backing	PFAS-Free Stain Resistant	200,000	40 Hours Class 4		WS	D
54" Tribeca CV 	100% Clean Vinyl/Phthalate Free Polyester Backing	Protective Overcoat	100,000	200 Hours Class 4		WS Bleach Cleanable (10:1)	D
54" Grid 	64% Repreve® Post Consumer Recycled Polyester, 36% Polyester Acrylic Backing		160,000	40 Hours Class 4		WS	C
56" Mello 	80% Post Consumer Recycled Polyester, 20% Polyester Acrylic Backing	PFAS-Free Stain Resistant	115,000	40 Hours Class 4		WS	D
56" Feltro 	100% Polyester	PFAS-Free Stain Resistant	115,000	40 Hours Class 4		WS	D
56" Guru 	100% Solution Dyed Polypropylene Acrylic Backing		100,000	40 Hours Class 5		WS	D

All patterns are FR free.

ACT Registered Certification Marks

Icon Upholstery Definitions

- Fire Retardancy**
Flammable testing determined as fabric's resistance to burning.
PASSES - California 117
- Colorfastness To Wet & Dry Crocking**
Colorfastness to wet & dry crocking refers to the rubbing off of color from the fabric unto clothing, hands or other materials and can occur under wet or dry conditions.
PASSES - AATCC 8-1974 Dry Crocking, Class 4 minimum; Wet Crocking, Class 3 minimum.
- Abrasion**
Abrasion is the ability of fabric to withstand damage from wear and rub. This is a general contract specification as well as a heavy duty specification.
PASSES -
 General Contact: ASTM 3579 modified (#10 cotton duck); 15,000 double rubs Wyzenbeek Method
 Heavy Duty: ASTM 3579 modified (#10 cotton duck); 30,000 double rubs Wyzenbeek Method or ASTM D4966 (with 21oz. weight); 40,000 rubs Martindale Method
- Colorfastness to Light**
Colorfastness to light is the degree to which fabric will retain its color when exposed to light.
PASSES - AATCC 16A-1974 or AATCC 16E-1976; Class 4 minimum at 40 Hours. NOTE: Class 4 minimum at 60 hours is recommended for direct sunlight exposure situations.



Physical Properties

3 Physical property tests include: brush pill test to determine a fabric's pilling. Breaking/tensile strength is the ability of a fabric to withstand tension without breaking or tearing. Seam slippage is the pulling apart of fabrics at the seam.
PASSES - Brush Pill ASTM D3511, 3-4 minimum. Breaking Strength ASTM D3597-D1682-64 (1975) 50lbs. minimum in warp & weft Seam Slippage ASTM D3597-D434-75 25lbs. minimum in warp & weft.

W: Water-based foam or cleaner.

WS: Water-based cleaning agents, foam, or solvent-based cleaners may be used. CAUTION: Use of water-based or detergent-based solvents may cause spotting, shrinking and/or permanent water stains. Solvent cleaning agents will remove water stains.

BC: Bleach Cleanable. Bleach cleanability is desired for any textile that may need to be disinfected or sterilized. Refer to the above chart for exact water to bleach solution. Rinse with water after cleaning.



PHONE 888.925.SEAT
FAX 866.925.SEAT
EMAIL sales@9to5seating.com

3211 Jack Northrop Ave.
Hawthorne, CA 90250

9to5seating.com
Follow us @9to5seating



For memo samples please contact:



MOMENTUM
TEXTILES & WALLCOVERING

Toll Free 800-366-6839
momentumtextilesandwalls.com

