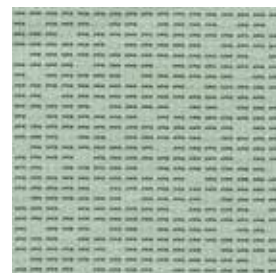
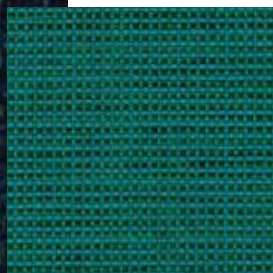
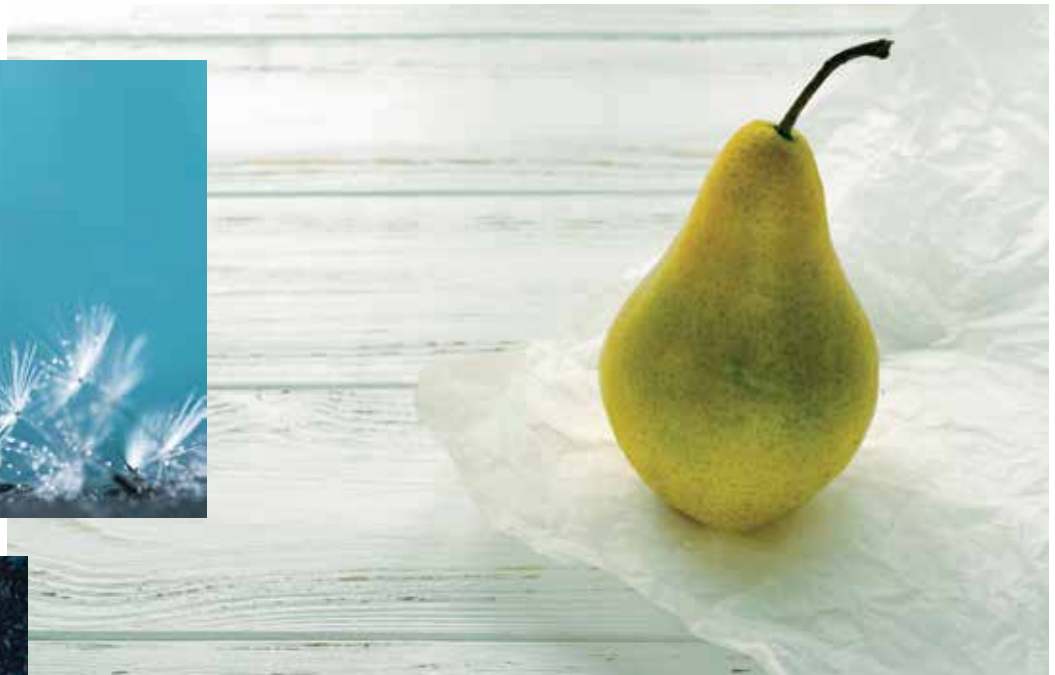


# breeze

COLLECTION



*Calypso  
Pear  
Concrete*

*Blue Note*



9to5<sup>®</sup>  
seating

BREEZE  
COLLECTION



BYTE

HARBOR

QUATRO

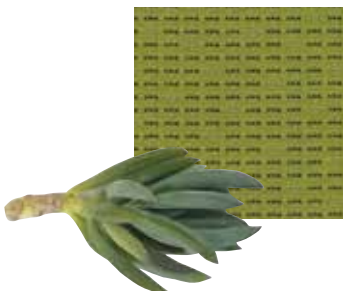
COASTAL

PALISADES

WALLACE

HUDSON

DECO

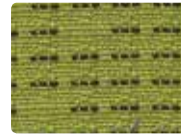




**Byte** Scarlet



Ocean



**Cactus**



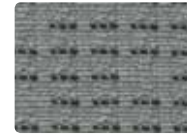
Concrete



Bluebird



Hunter



Pewter



Indigo



Wizard



Carbon



**Harbor** Lime



Barley



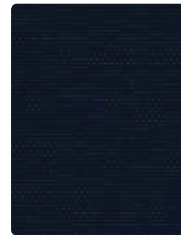
Santorini



Anchor



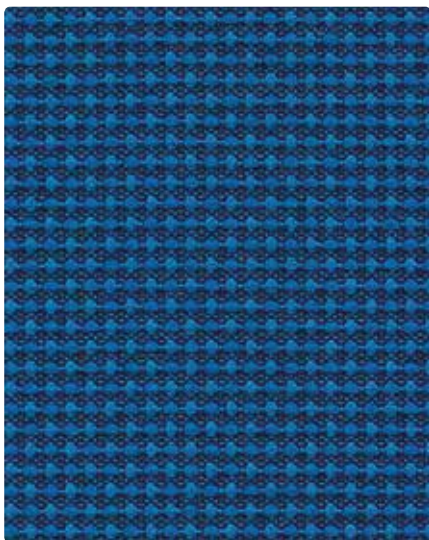
Flame



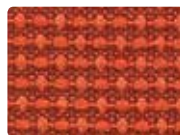
Admiral



Abyss



**Quatro** Varsity



Persimmon



Sundance



Platinum



Salsa



Kiwi



Smoke



Mulberry



Turf

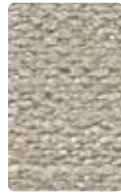


Panther





Coastal Firefly



Pearl



Crush



Seagrass



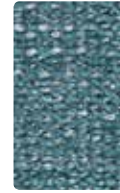
Gibraltar



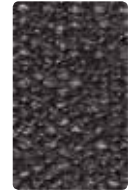
Macadamia



Siren



Seaside



Sharkskin



Cliffside



Amethyst



Meridian



Nightfall



Parchment



Romance



Avocado



Feather



Sand



Bonfire



Grove



Granite



Harmony



Dijon



Placid



Black Pepper



Castle



Harvest



Fountain



Blue Note



Palisades Blue Note



**Wallace** Rusty



Hint



Pear



Greyhound



Highland



Blue Jean



Oxford



Sable



Black Tie



Carbide



**Hudson** Gravel



Khaki



Sky



Lead



Valentine



Academy



Caviar



**Deco** Calypso



Vermillion



Artichoke



Linen



Majesty



Calypso



Slate



Raspberry



Pacific



Shadow



## 9to5 Seating's ExpressShip Fabric Program

**Need it fast?** We have you covered with a wide variety of upholstery options! Our ExpressShip program offers expedited shipment on our seating products, now including the Breeze Collection. Other ExpressShip fabric options include the 9to5 Signature Card and Vivid fabric card. Memo samples are available. Please contact the factory for larger swatches.

## info

Pattern	Content	Abrasion Resistance (Double Rubs)	Finish	Cleaning Code	Grade
Byte**	94% Post-Consumer Recycled Polyester 6% Pre-Consumer Recycled Polyester	100,000	None	WS BC (10:1)	B
Coastal	84% Polyester, 16% Rayon	100,000	Stain Repellent	WS	B
Deco	100% Polyester	100,000	Stain Repellent	WS	C
Harbor	100% Polyester	120,000	Water Repellent	WS	A
Hudson	100% Polyester	75,000	Water Repellent	WS	A
Quatro	53% Polyester 47% Pre-Consumer Recycled Polyester	100,000	None	WS	C
Palisades	50% Acrylic, 50% Polyester	100,000	Stain Repellent	WS	C
Wallace	100% Polyester	55,000	i-clean™	W	B



These patterns meet or exceed these ACT Performance standards for upholstery.

\*\*Healthier Hospitals compliant

All patterns are FR free.

### Icon Upholstery Definitions



#### Fire Retardancy

Flammable testing determines a fabric's resistance to burning. Passes Cal 117.



#### Colorfastness To Wet & Dry Crocking

The rubbing off of color from the fabric onto clothing, hands or other materials and can occur under wet or dry conditions. Passes AATCC 8-1974 Dry Crocking. Class 4 minimum, Wet Crocking. Class 3 minimum.



#### Colorfastness to Light

The degree to which fabric will retain its color when exposed to light. Passes AATCC 16A-1974 or AATCC 16E-1976. Class 4 minimum at 40 Hours. Note: Class 4 minimum at 60 hours is recommended for direct sunlight exposure.



#### Physical Properties

Brush Pili Test determines a fabric's pilling. Breaking/Tensile Strength Test determines the ability of a fabric to withstand tension without breaking or tearing. Seam Slippage Test determines the pulling apart of fabrics at the seams. Passes Brush Pili ASTM D3511, 3-4 minimum. Breaking Strength ASTM D3597-D1682-64 (1975) 50 lbs. minimum in warp & weft, Seam Slippage ASTM D3597-D434-75 25 lbs. minimum in warp & weft.



#### Abrasion

The ability of a fabric to withstand damage from wear and rubbing. Passes Heavy Duty Contract ASTM 3597 modified (No. 10 cotton duck); 30,000 double rubs Wyzenbeek Method or ASTM D4966 modified (with 21 oz. weight); 40,000 rubs Martindale Method.

### Cleaning Codes

**W:** Water-based cleaning agents or foam may be used.

**WS:** Water-based cleaning agents or foam may be used. CAUTION: Use of water-based or detergent-based solvents may cause spotting, shrinking and/or permanent water stains. Solvent cleaning agents will remove water stains.

**BC:** Bleach Cleanable. Bleach cleanability is desirable for any fabric that may need to be disinfected or sterilized. Use a 10:1 water to bleach solution and rinse with water after cleaning.

### Finish Definitions

**i-clean™** is a high performance stain, and moisture repellent, based on Nano technology.

**Stain Repellent** is designed to withstand most discoloration caused by contact with liquids.

**Water Repellent** repels most water and oil but is not thoroughly waterproof.

**9to5  
seating**

PHONE 888.925.SEAT

FAX 866.925.SEAT

EMAIL sales@9to5seating.com

3211 Jack Northrop Ave.  
Hawthorne, CA 90250

9to5seating.com  
Follow us @9to5seating

