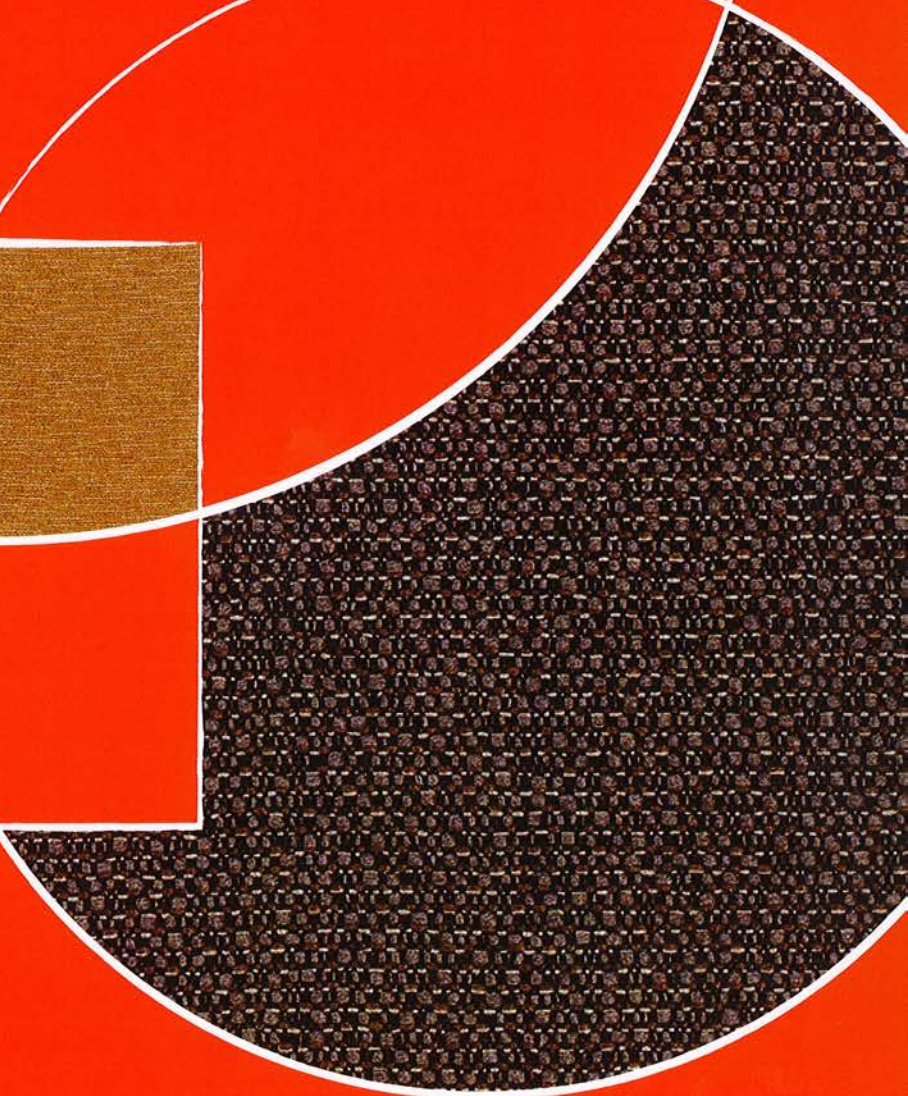


9to5[®]
seating

basics



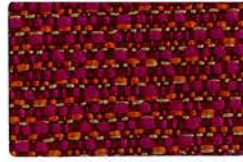
Grade B



Bangle Granite



Cork



Orchid



Teak



Baltic



Suede



Sable

Grade B



Insight Wasabi



Blond



Real Red



Fossil



Shale



Periwinkle



Pepper



Midnight



Bark



Port



Eggplant



Summit



Ebony

Grade C



Syntax Plant



Turquoise



Carmine



Pewter



Tiger Eye



Hudson



Steel

Grade B



Fuse Lunar



Saffron



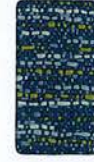
Morel



Pimento



Malted



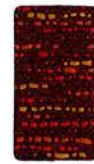
Pristine



Cress



Ginger



Carmine



Walnut



Azurean



Iris



Pepper

Grade C



Hue Quarry



Dandelion



Frothe



Stem



Hibiscus



Chipotle



Char



Paprika



Latte



Cocoa



Aspen

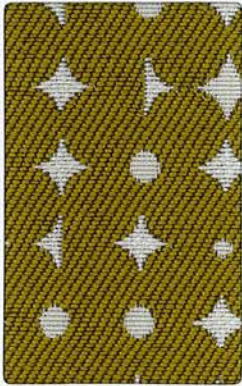


Indigo



Black

Grade C



Decode Grove



Blaze



Nickel



Cherry



Elm



Alloy



Graphite

Grade C



Current Birch



Pecan



Plum



Espresso



Moss



Cadet



Eclipse

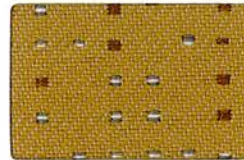
Grade C



Via Slate



Khaki



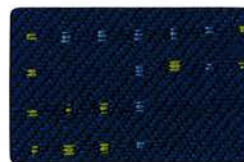
Cornsilk



Feldspar



Cayenne



Pristine



Galaxy

Width - Pattern	Fiber Content & Backing	Finish	Abrasion (D.R.)	Light-fastness	Approx. Repeats	Cleaning Code	Grade
54" BANGLE ▲▲▲▲▲▲▲▲	58% Post Consumer Recycled Polyester, 42% Polyester Acrylic Backing	Soil and Stain Resistant	51,000	40 Hrs. Class 4.5		WS	B
56" CURRENT ▲▲▲▲▲▲▲▲	100% Post Consumer Recycled Polyester Acrylic Backing	Soil and Stain Resistant	100,000	40 Hrs. Class 4	13" L, 7 1/2" W	WS	C
54" DECODE ▲▲▲▲▲▲▲▲	100% Post Consumer Recycled Polyester Acrylic Backing	Soil and Stain Resistant	60,000	40 Hrs. Class 4.5	3 1/4" L, 3" W	WS	C
54" FUSE ▲▲▲▲▲▲▲▲	65% Post Industrial Recycled Polyester, 35% Post Consumer Recycled Polyester Latex Backing	Soil and Stain Resistant	100,000	40 Hrs. Class 4.5		WS	B
54" HUE ▲▲▲▲▲▲▲▲	100% Post Industrial Recycled Polyester Latex Backing	Teflon®	1,000,000	60 Hrs. Class 4.5		WS	C
54" INSIGHT ▲▲▲▲▲▲▲▲	100% Polyester Acrylic Backing	Soil and Stain Resistant	192,000	40 Hrs. Class 5	1/4" L, 1/2" W	WS	B
54" SYNTAX ▲▲▲▲▲▲▲▲	50% Post Consumer Recycled Polyester, 50% Polyester Acrylic Backing	Soil and Stain Resistant	115,000	40 Hrs. Class 4.5	6 1/4" L, 7 1/8" W	WS	C
56" VIA ▲▲▲▲▲▲▲▲	69% Post Consumer Recycled Polyester, 31% Polyester Acrylic Backing	Soil and Stain Resistant	80,000	40 Hrs. Class 4	3 3/8" L, 3" W	WS	C

*ACT® Registered Certification Marks

EXPLANATION OF ACT ICONS FOR UPHOLSTERY

FIRE RETARDANCY

Flammability testing determined as fabric's resistance to burning.

PASSES
California 117 2013

COLORFASTNESS TO WET & DRY CROCKING

Colorfastness to wet & dry crocking refers to the rubbing off of color from the fabric onto clothing, hands or other materials and can occur under wet or dry conditions.

PASSES
AATCC 8-1974 Dry Crocking, Class 4 minimum; Wet Crocking, Class 3 minimum

COLORFASTNESS TO LIGHT

Colorfastness to light is the degree to which fabric will retain its color when exposed to light.

PASSES
AATCC 16A-1974 or AATCC 16E-1976; Class 4 minimum at 40 hours
NOTE: Class 4 minimum at 60 hours is recommended for direct sunlight exposure situations

PHYSICAL PROPERTIES

3 physical property tests include: brush pill test to determine a fabric's pilling. Breaking/tensile strength is the ability of a fabric to withstand tension without breaking or tearing. Seam slippage is the pulling apart of fabrics at the seams.

PASSES
Brush Pill ASTM D3511, 3-4 minimum
Breaking Strength ASTM D3597-D1682-64 (1975) 50 lbs. minimum in warp & weft
Seam Slippage ASTM D3597-D434-75 25 lbs. minimum in warp & weft

For memo samples please contact.

MOMENTUM
TEXTILES

Toll Free 800-366-6839
memosamples.com



ABRASION

Abrasion is the ability of a fabric to withstand damage from wear and rubbing. There is a general contract specification as well as a heavy duty specification.

General Contract **PASSES**
ASTM 3597 modified (#10 cotton duck); 15,000 double rubs Wyzenbeek Method

Heavy Duty **PASSES**
ASTM 3597 modified (#10 cotton duck); 30,000 double rubs Wyzenbeek Method or ASTM D4966 (with 21 oz. weight); 40,000 rubs Martindale Method

CLEANING CODE DEFINITIONS

WS: Water-based cleaning agents or foam.



9 to 5 Seating
3211 Jack Northrop Ave.
Hawthorne, CA 90250
Tel: 888.925.SEAT --> 888.925.7328
Fax: 866.925.SEAT --> 866.925.7328