

Impress the Senses



Collection	Composition	Weight / Thickness	Repeat	Abrasion	Air Permeability / Sound Absorption	Antimicrobial	Grade
Brisa (BR) Breathable Comfort Acoustics	100% Polycarbonate Polyurethane Surface 65% Polyester, 35% Rayon Backing	8.9 oz. per sq. yard Approx. 0.95 mm	N/A	ASTM D4157 300,000 DR Wyzenbeek	ASTM D737 / ASTM C423	N/A	F
Fusion (FN) Responsible Innovation	100% Polycarbonate Polyurethane Surface 65% Polyester, 35% Rayon Backing	10.6 oz. per sq. yard Approx. 1.05 mm	N/A	ASTM D4157 250,000 DR Wyzenbeek	N/A	N/A	F
Reef Pro (URP) Ink & Stain Resistant*	100% Polycarbonate Polyurethane Surface 65% Polyester, 35% Rayon Backing	12.1 oz. per sq. yard Approx. 1.15 mm	N/A	ASTM D4157 400,000 DR Wyzenbeek	N/A	N/A	G
Tottori (TO) Responsible Innovation	100% Polycarbonate Polyurethane Surface 65% Polyester, 35% Rayon Backing	12.4 oz. per sq. yard Approx. 1.1 mm	N/A	ASTM D4157 400,000 DR Wyzenbeek	N/A	N/A	F
Ultraleather Pro (UP) Ink & Stain Resistant* Antimicrobial	100% Polycarbonate Polyurethane Surface 100% Rayon Backing	9.7 oz. per sq. yard Approx. 0.95 mm	N/A	ASTM D4157 500,000 DR Wyzenbeek	N/A	ASTM E2180	G
Wired (WI) Responsible Innovation	100% Polycarbonate Polyurethane Surface 65% Polyester, 35% Rayon Backing	10.3 oz. per sq. yard Approx. 1.1 mm	27.55"V x 16.61"H	ASTM D4157 400,000 DR Wyzenbeek	N/A	N/A	G
Width:	54"						
Hydrolysis:	14+ Weeks ASTM D3690 SECT. 6.11 (Hydrolytic Stability) / ISO 1419 Method C (Accelerated Ageing)						
F/R Rating: (FR Free)	ASTM E84 (adhered) - Class A CA TB 117 - Pass FMVSS 302 & 95/28 ANNEX IV - Pass NFPA 260 - Class 1 UFAC - Class		Can be treated to meet FAR specifications. These fabrics, when treated and/or used with other compatible furniture components, have been shown to perform under the fire test conditions of ASTM E84 (unadhered), BS 5852 Source 0, 1 & 5 (Cig, Match and Crib 5), BS EN 1021 Parts 1 & 2 (Cig & Match)* & IMO Part 8. * excludes Fusion				
Adhesion of Coating:	ASTM D751						
Tear Strength:	ASTM D2261						
Breaking Strength:	ASTM D5034						
Tensile Strength:	BS EN ISO 1421						
Colorfastness to Crocking:	AATCC 8, Grade 4-5 Wet & Dry						
Colorfastness to Light:	AATCC 16.3, 200 Hours, Grade 4 ISO 105 B02, Grade 6						

*Removal of most denim dye may vary depending on the quality of dye and the period of time the stain sets in. Dye transfer is difficult to control, not always preventable, and may be irreversible.

Cleaning & Care

- Wipe up spills as soon as they occur
- Clean with soap and water
- Sanitize using disinfectants such as (5:1) water to bleach solution
- For stubborn stains, wipe off with isopropyl alcohol as soon as possible*
- Thoroughly rinse all solution residue with clean water
- Air dry

For more information on certifications and standards, sustainability, as well as in depth cleaning and care instructions, and to order memo samples, please visit www.ultrafabricsinc.com.



PHONE 888.925.SEAT

FAX 866.925.SEAT

EMAIL sales@9to5seating.com

3211 Jack Northrop Ave.
Hawthorne, CA 90250

9to5seating.com
Follow us @9to5seating



Ultraleather Pro (UP)

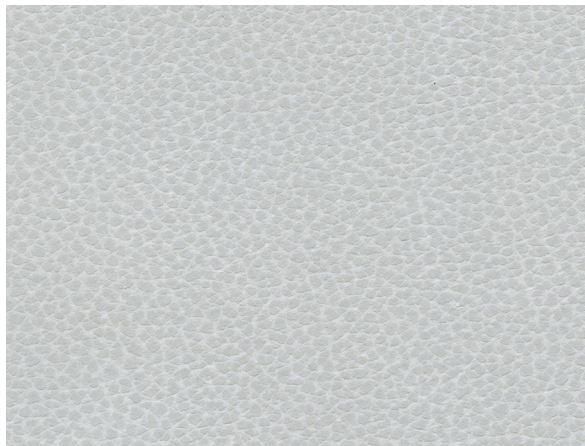
Antimicrobial • Ink & Stain Resistant



UP Moon Glow

Reef Pro (URP)

Ink & Stain Resistant



URP Beluga

Brisa (BRO)

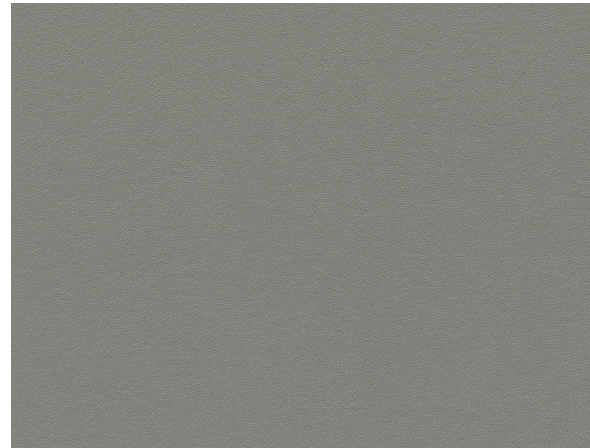
Breathable Comfort • Acoustics



BRO Quicksilver

Fusion (FN)

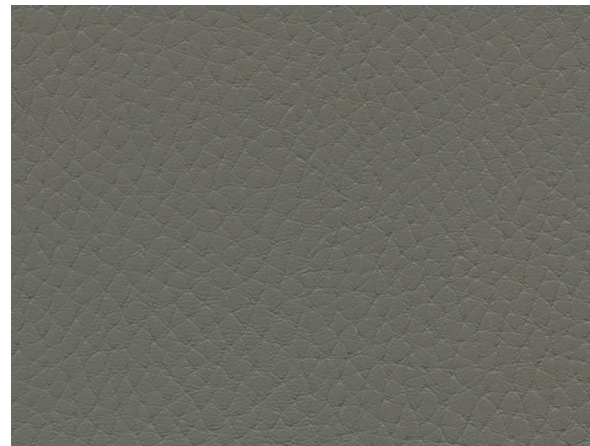
Responsible Innovation



FN Dime

Tottori (TO)

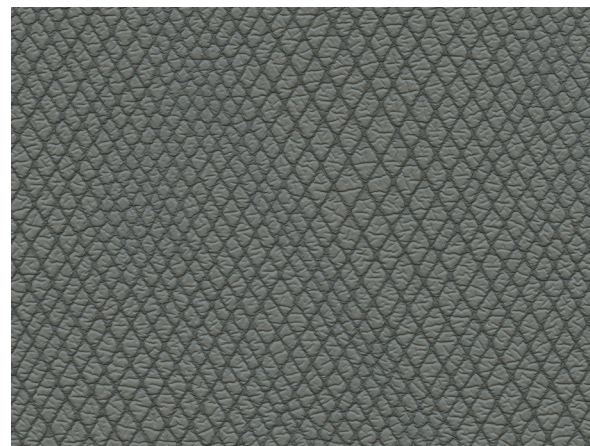
Responsible Innovation



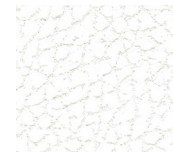
TO Sand Castle

Wired (WI)

Responsible Innovation



WI Dust



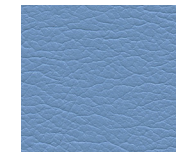
BRO White



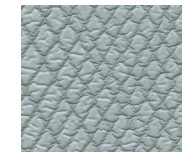
UP Parfait



UP Melon



UP Sky



WI Baby Blue



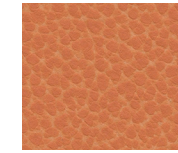
UP White Wash



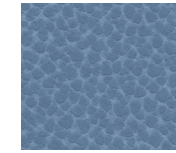
WI Milkshake



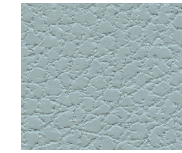
URP Sea Star



URP Clownfish



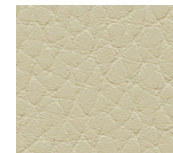
URP Saltwater



BRO Sterling Blue



FN Steam



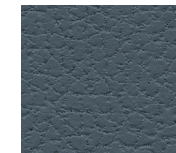
TO Udon



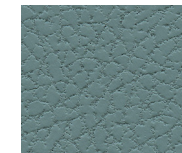
BRO Bone



URP Lobster



BRO Skyway



BRO Mineral



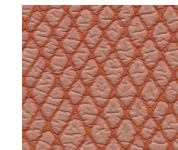
BRO Moon



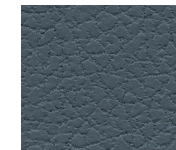
UP Cork



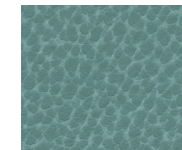
BRO Wishbone



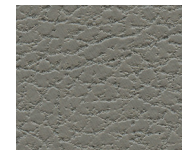
WI Marmalade



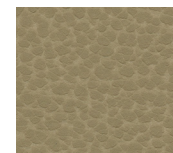
BRO Cambridge Blue



URP Caribbean



BRO Ash



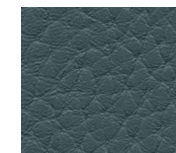
URP Boardwalk



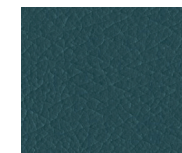
WI Butter Cookie



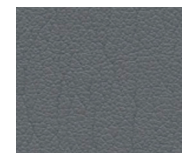
BRO Cinnabar



TO Blue Mirage



UP Coastal



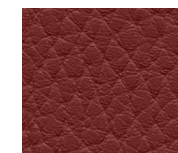
UP Char



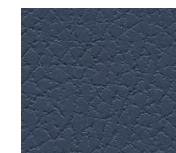
BRO Ginger



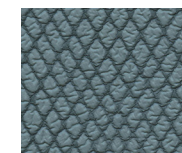
TO Tatami Mat



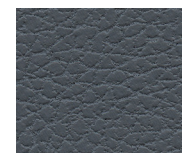
TO Rouge



BRO Evening Blue



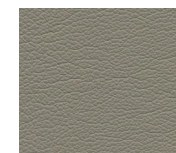
WI Aquarius



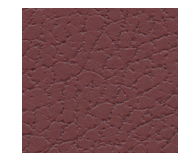
BRO Wrought Iron



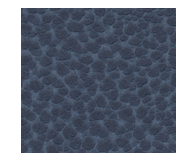
TO Ginseng



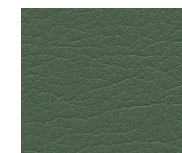
UP Woodcres



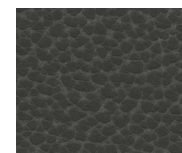
BRO Beet Root



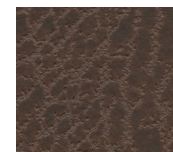
URP Captain



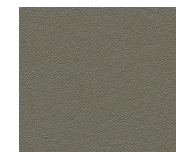
UP Arugula



URP Stingray



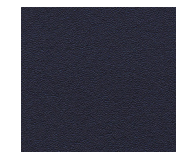
UP Dark Chocolate



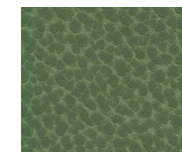
FN Portobello



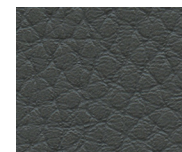
UP Mauve



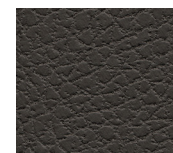
FN Deep Midnight



URP Algae



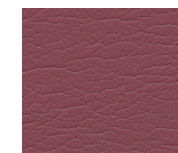
TO Classic Grey



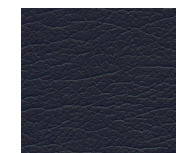
BRO Coffee Bean



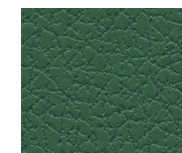
BRO Shiitake



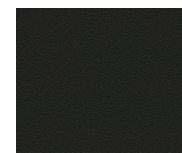
UP Azalea



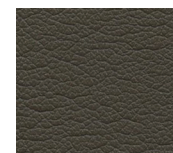
UP Oxford Blue



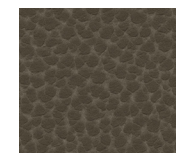
BRO Esmeralda



FN Caviar



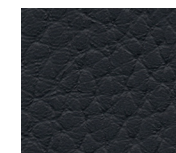
TO Black Sesame



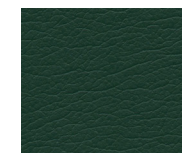
URP Lionfish



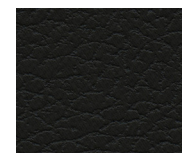
FN Chambord



TO Shibori Blue



UP Sherwood



BRO Black Onyx