

9to5[®]
s e a t i n g

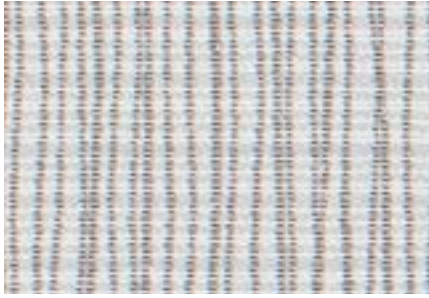


EXPRESSSHIP
FABRICS

swift



MOMENTUM GROUP



GRAPH ALPINE



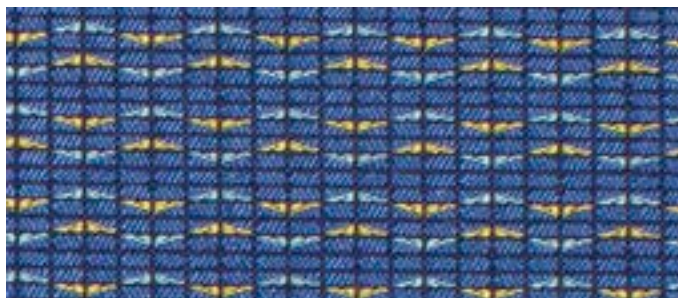
ORIGIN EUREKA



KNACK FILAMENT



BEELINE TIDAL



SLICE ADMIRAL



POPPY



PARROT



ECO



SODALITE



TEAK



REED



SPROUT



GEYSER



TIDAL



LAPIS



GARNET



IRON



ZING



FRESCO



NIMBUS



PORTOBELLO



MILLER



HENNA



BARK



COAL



SAPPHIRE



JET



BRISK



CARBON



FORGE



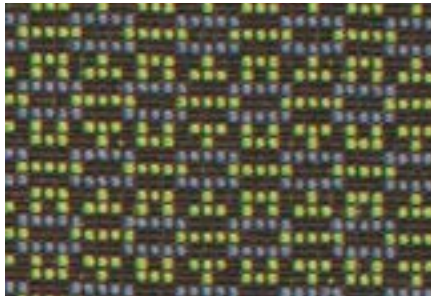
WALNUT



PUMICE



CHARCOAL



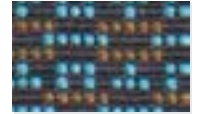
BOBBY MOSS



LEMON



GLOW



AQUA



FUSCHSIA



IRIS



ANCHOR



FUSE LUNAR



PRISTINE



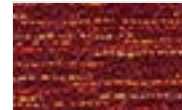
GINGER



WALNUT



AZUREAN



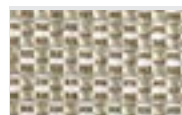
CARMINE



PEPPER



EPIC KIWI



LIMESTONE



SLICE



PORCINI



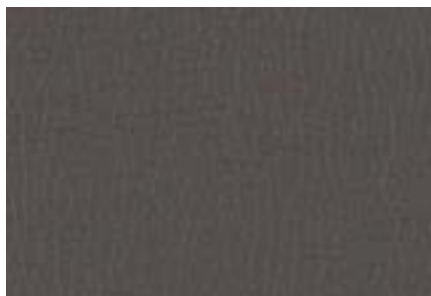
AZURE



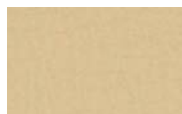
STEEL



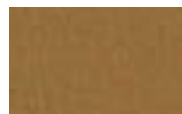
GRANITE



CANTER IRON



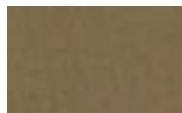
SAND



SAFARI



SABLE



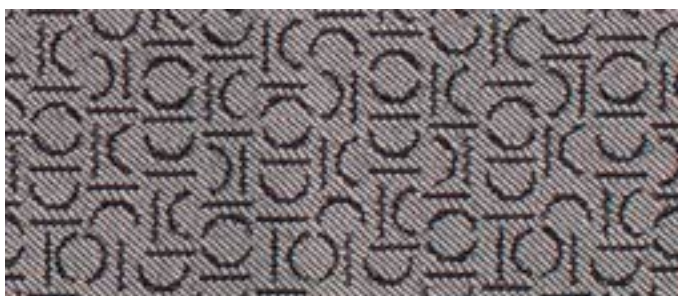
EARTH



NIGHT



ONYX



PARENTHESIS STEEL



VIOLET



LIME



CAPRI



CHARCOAL

Width - Pattern	Fiber Content & Backing	Finish	Abrasion (D.R.)	Light-fastness	Approx. Repeats	Cleaning Code	Grade
54" BEELINE ☹️ A ☀️ 🍷 🌟 *	100% Polyurethane Polyester Backing		500,000	200 Hrs. Class 4.5		W Bleach Cleanable (4:1)	C
56" BOBBY ☹️ A ☀️ 🍷 🌟 *	68% Post Consumer Recycled Polyester, 32% Polyester Acrylic Backing	Soil and Stain Resistant	150,000	40 Hrs. Class 3.5	7/8" L, 1/2" W	WS	B
56" CANTER ☹️ A ☀️ 🍷 🌟 *	100% Polyurethane Polyester Backing		240,000	200 Hrs. Class 4.5		W Bleach Cleanable (4:1)	B
54" EPIC ☹️ A ☀️ 🍷 🌟 *	50% Polyester, 32% Post Industrial Recycled Polyester, 18% Post Consumer Recycled Polyester, Acrylic Backing	Soil and Stain Resistant	100,000	40 Hrs. Class 5	3/8" L, 1/8" W	WS	C
54" FUSE ☹️ A ☀️ 🍷 🌟 *	65% Post Industrial Recycled Polyester, 35% Post Consumer Recycled Polyester, Latex Backing	Soil and Stain Resistant	100,000	40 Hrs. Class 4.5		WS	B
56" GRAPH ☹️ A ☀️ 🍷 🌟 *	75% Post Consumer Recycled Polyester, 25% Polyester Acrylic Backing	Soil and Stain Resistant	170,000	40 Hrs. Class 5	3 3/8" L, 7 1/2" W	W	B
54" KNACK ☹️ A ☀️ 🍷 🌟 *	100% Post Consumer Recycled Polyester, Acrylic Backing	Soil and Stain Resistant	100,000	40 Hrs. Class 5	1 5/8" L, 1 3/4" W	WS	C
58" ORIGIN ☹️ A ☀️ 🍷 🌟 *	100% Post Consumer Recycled Polyester Acrylic Backing	Soil and Stain Resistant	282,000	40 Hrs. Class 4		WS	B
54" PARENTHESIS ☹️ A ☀️ 🍷 🌟 *	50% Post Consumer Recycled Polyester, 50% Polyester Acrylic Backing	Soil and Stain Resistant	165,000	40 Hrs. Class 4.5	9 7/8" L, 1 1/8" W	WS	B
54" SLICE ☹️ A ☀️ 🍷 🌟 *	84% Post Consumer Recycled Polyester, 16% Polyester Acrylic Backing	Soil and Stain Resistant	80,000	40 Hrs. Class 5	7/8" L, 3/4" W	WS	B

*ACT® Registered Certification Marks

EXPLANATION OF ACT ICONS FOR UPHOLSTERY

FIRE RETARDANCY

Flammability testing determined as fabric's resistance to burning.



PASSES
California 117 2013

COLORFASTNESS TO WET & DRY CROCKING

Colorfastness to wet & dry crocking refers to the rubbing off of color from the fabric onto clothing, hands or other materials and can occur under wet or dry conditions.



PASSES
AATCC 8-1974 Dry Crocking, Class 4 minimum; Wet Crocking, Class 3 minimum

COLORFASTNESS TO LIGHT

Colorfastness to light is the degree to which fabric will retain its color when exposed to light.



PASSES
AATCC 16A-1974 or AATCC 16E-1976; Class 4 minimum at 40 hours
NOTE: Class 4 minimum at 60 hours is recommended for direct sunlight exposure situations

PHYSICAL PROPERTIES

3 physical property tests include: brush pill test to determine a fabric's pilling. Breaking/tensile strength is the ability of a fabric to withstand tension without breaking or tearing. Seam slippage is the pulling apart of fabrics at the seams.



PASSES
Brush Pill ASTM D3511, 3-4 minimum
Breaking Strength ASTM D3597-D1682-64 (1975) 50 lbs. minimum in warp & weft
Seam Slippage ASTM D3597-D434-75 25 lbs. minimum in warp & weft

ABRASION

Abrasion is the ability of a fabric to withstand damage from wear and rubbing. There is a general contract specification as well as a heavy duty specification.



PASSES
General Contract ASTM 3597 modified (#10 cotton duck); 15,000 double rubs Wyzenbeek Method



Heavy Duty ASTM 3597 modified (#10 cotton duck); 30,000 double rubs Wyzenbeek Method or ASTM D4966 (with 21 oz. weight); 40,000 rubs Martindale Method

CLEANING CODE DEFINITIONS

WS: Water-based cleaning agents or foam.



For memo samples please contact.

MOMENTUM
T E X T I L E S

Toll Free 800-366-6839
memosamples.com

9to5[®]
s e a t i n g

9 to 5 Seating
3211 Jack Northrop Ave.
Hawthorne, CA 90250
Tel: 888.925.SEAT --> 888.925.7328
Fax: 866.925.SEAT --> 866.925.7328